



KONGRESI I 7-te i SHOQATES GJEOFIZIKE TE BALLKANIT

GEOFYSICAL OUTLOOK ON STRUCTURE OF THE ALBANIDES

Alfred FRASHERI¹, Salvatore BUSHATI², Vilson BARE³

¹ Polytechnic University of Tirana, Faculty of Geology and Mining, Tirana, Albania.

² Academy of Sciences of Republic of Albania, Tirana, Albania

³ National Scientific Center of Hydrocarbons, Fier, Albania

ABSTRACT

The Albanides represents the assemblage of the geological structures in the territory of Albania. This paper presents the structural analysis of the Albanides according to the seismological, reflection seismic, gravity, magnetic, electrical, and geothermal surveys. Two major paleogeographic domains form the Albanides. The Internal Albanides formed part of the Subpelagonian Trough. The External Albanides was developed out of the western passive margin and continental shelf of the Adriatic plate. Regional gravity anomalies and seismological data are interpreted as caused by the variation of the depth of Moho discontinuity, and a block construction of the crust. The Earth crust in Albanides is interrupted by a system of longitudinal fractures in NW - SE direction and transversal fractures. Intensive Bouguer anomalies and turbulent magnetic field with weak anomalies characterize ophiolitic belt of the Internal Albanides. These data show about the allochthon character of ophiolites. The relations between the Internal and the External Albanides have a nape character, going toward SW. A joint characteristic of structural belt of Ionian and Kruja zones in External Albanides is their westward thrusting, too. Two tectonic styles are observed in the Ionian tectonic zone: duplex and imbricate tectonic. Miocene and Pliocene molasses of Peri-Adriatic Depression cover Western part of Ionian zone.

Interpretation of the results of integrated geophysical surveys, in the framework of geological studies is presented in the paper.

Key words: Albanides, Mediterranean Folded Belt, Geophysics.

INTRODUCTION

Integrated regional geophysical studies have been performed for exploration of the Albanides, on land and in the Adriatic Sea Continental Shelf. Seismological studies, gravity and magnetic surveys, reflection seismic lines, geothermal studies, radiometric investigations, vertical electric soundings and well logging are considered in this integrated geophysical investigation. Interpretations of the geophysical data have realized on the base of regional geological studies. Only part of all regional geophysical and geological literature, which we have consulted, is presented in the reference paragraph.

The Albanides represents the assemblage of the geological structures in the territory of Albania, and together with Dinarides at the North and Hellenides at their South form the southern branch of the Mediterranean Alpine Belt (Fig. 1), (Aubouen. and Ndojaj, 1964, Aubouen 1973, Biçoku and Papa 1965, Biçoku 2000, Bushati 1988, Frasheri et al. 1998, I.G.S. 1983, 1985, Meço and

Aliaj 2000, Melo, 1986, Papa 1970). This paper presents the structural analysis of the Albanides according to the seismological, reflection seismic, gravity, magnetic, electrical, and geothermal surveys, in the framework of the integrated interpretation with geological observations.

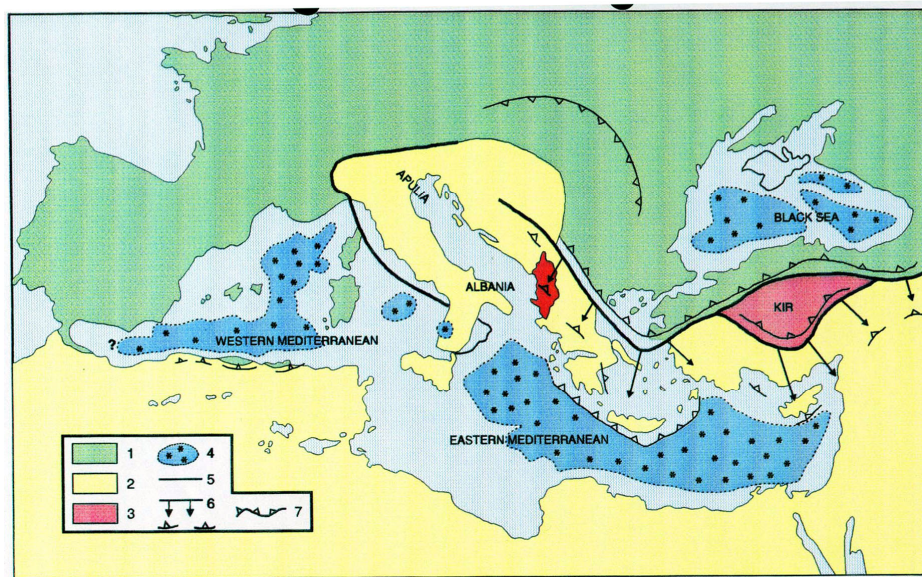


Fig. 1. Schematic Map of African Plate Subduction under the Euroasiatic one. (After Ricou, El. 1986).

Fig. 1. Euro-Asiatic Continent; 2- African continent; 3- Kishir block; 4- Presents Oceanic Basins; 5- Boundaries of Mesozoic Oceans; 6- Boundaries of Mesozoic Ocean and the Main Ophiolitic Nappes; 7- Troughs of present and past subduction.

Two major paleogeographic domains form the Albanides: the Internal Albanides in the eastern part and the External Albanides in the western part of Albania (Fig. 2).

The Internal Albanides formed part of the Subpelagonian Trough. The Internal Albanides are characterized by the presence of the immense and intensively tectonized ophiolitic belt which expands from E to W as overthrust. Internal Albanides has been affected by the paleotectonic stage. There are two viewpoints about the placement of the ophiolites: The allochthon character of the ophiolitic nappe (Auboin 1973, Cadet et al. 1980, Çollaku et al. 1992, Frasheri et al. 1995, 1996, Frasheri 2000, Hoxha et Bushati 1996, Hoxha 2001, Hoxha et Avxhiu 2000, Lubonja et al. 1968, Langore et Bushati 1985, Melo 1986, Papa 1993, Qirinxhi 1970, Veizaj and Frasheri 1996) and autochthon ophiolitic belt (Beccaluva et al. 1994, Gjata et al. 1999, Gjata 2000, Kane et al. 1999, Kodra 1987, 1988, Kodra al. 1996, 2000, Robertson and Shallo 2000, Shallo et al. 1989). Tectonic development of the Internal Albanides has been during Triassic and Jurassic (Kodra A. 1987).

The External Albanides was developed out of the western passive margin and continental shelf of the Adriatic plate. The External Albanides are affected only by the later paleotectonic stages, and are characterized by regular structural belts, which are associated with thrust and over tectonic. Geophysical data reveal that the Earth crust becomes thicker from central regions of Adriatic towards Albanides in land (Bare et al. 1996, Dalipi 1985, 1987, Dhima et al. 1996, Guri et al. 1996, Mëhillka et al. 1996, 1999, Nishani 1985, Papa et Kondo 1968, Seitaj et al. 1996, Valbona et al. 1997, Velaj 1999, Xhufi et al. 1999).

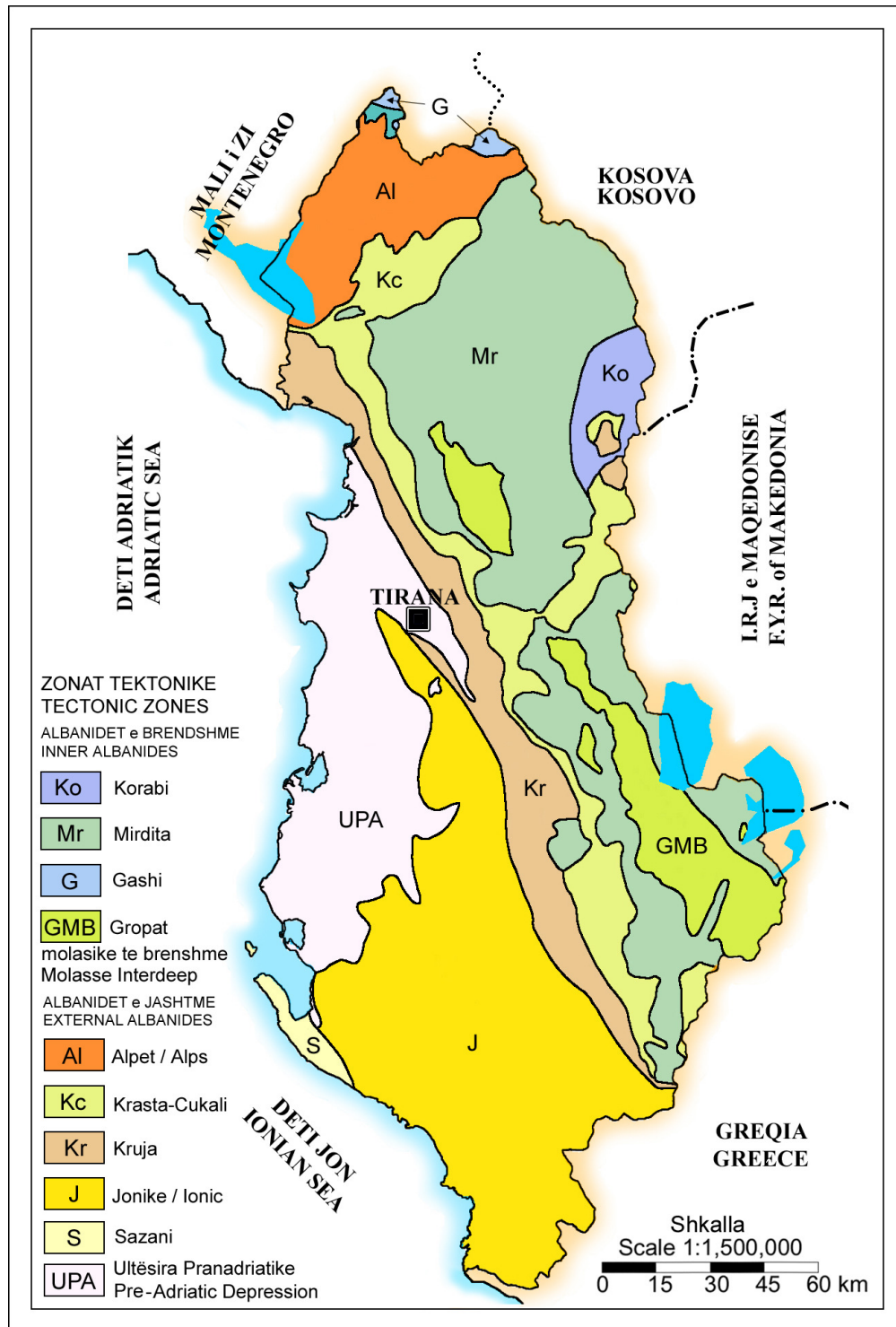


Fig. 2. Schematic Tectonic Map of Albania. (After Tectonic Map of Republic of Albania, at scale 1:200.000, 1985).

The thickness of sedimentary basin is 8-9 km in Adriatic seashore and reaches up to 15 km in northwestern regions of Albania (Fig. 3), (Fraseri et al. 1998, 2000, Koçiu 1987, Veizaj 1995,

Veizaj and Frasheri 1996. The depth of Moho discontinuity is 40 -50 km. Its maximum thickness (15 km) is observed at NW Albania. The regional gravity anomalies are attributed to the Moho undulations, and a block setting of the crust. The latter is in accordance with the results from seismological studies (Fig. 3, 4). The earth crust is characterized by a system of longitudinal fractures in NW - SE direction and transversal faults, that touch even the mantle. Some of them separate even the tectonic zones. This tectonic construction of the deep levels of the earth crust in Albanides finds its reflection even in the scattering of the magnetic fields.

According to geological data, regional geophysical studies and based on structural criteria the Albanides consist of the following zones ones (Fig. 2):

<i>In Albanides</i>	<i>equivalent in Hellenides</i>	<i>and</i>	<i>in Dinarides</i>
<i>Internal Albanides</i>			
Korabi	Pelagonian		Golia
Mirdita	Subpelagonian		Serbian
Gashi			Durmitor
<i>External Albanides</i>			
Albanian Alps	Parnas		High karst
Krasta-Cukali	Pindos		Budva
Kruja	Gavrovo		Dalmate
Ionian	Ionian		
Sazani	Preapulian		
Peri Adriatic Depression			

Intensive Bouguer anomalies and very turbulent magnetic field, with weak anomalies (Bushati 1988, 1997) (Fig. 5, 6, 7), characterize ophiolitic belt of the Mirdita tectonic zone in Internal Albanides. These omit data shows as follow: Kukës ultrabasic massif in the NE of the ophiolitic belt exhibits a maximum thickness of 14 km (Fig. 8, 10, 11, 12). Towards west and southeast this thickness is reduced to 2 km. This interpretation shows allochthon character of ophiolite belt and the covering character of the western contact of ophiolitic belt, under which the formation of Krasta-Cukali zone of External Albanides is laid. The relations between the Internal and the External Albanides have a nape character, going toward S-WW direction. The separation of the gravity and the magnetic anomalous belts in the central region of the Internal Albanides, at Shengjergji flysch corridor, are arguments the presence of Diber -Elbasan - Vlora transversal. This transversal has played a significant role in the geology of Albanides (Fig. 4; 5; 6, 7).

A joint characteristic of structural belt of Ionian and Kruja zones in External Albanides is their westward thrusting too (Fig. 8, 10, 11, 12). The thrusting process is helped by the presence of the Triassic evaporite sheet under the carbonate section. According to the integrated geological-geophysical studies and deep wells data results that two tectonic styles are observed namely the Ionian and the duplex and imbricate one. Traversal tectonic faults have separated the Ionian basin in several blocks. Interpreting the limestone top additionally, the southern Adriatic basin limestone formation is partly extended under the Sazani, Ionian and Kruja zones.

Peri-Adriatic Miocene and Pliocene mosaic deposits cover the Sazani, Ionian and partly Kruja tectonic zones. This Neogene molasses is placed transgressively over the oldest ones up to the limestone of the Ionian zone, creating a two-stage structure (Fig. 20). The molasses post-orogenic deposits were covered transgressively Mirdita and partially Krasta – Cukali tectonic zones in Korça and Burreli basins.

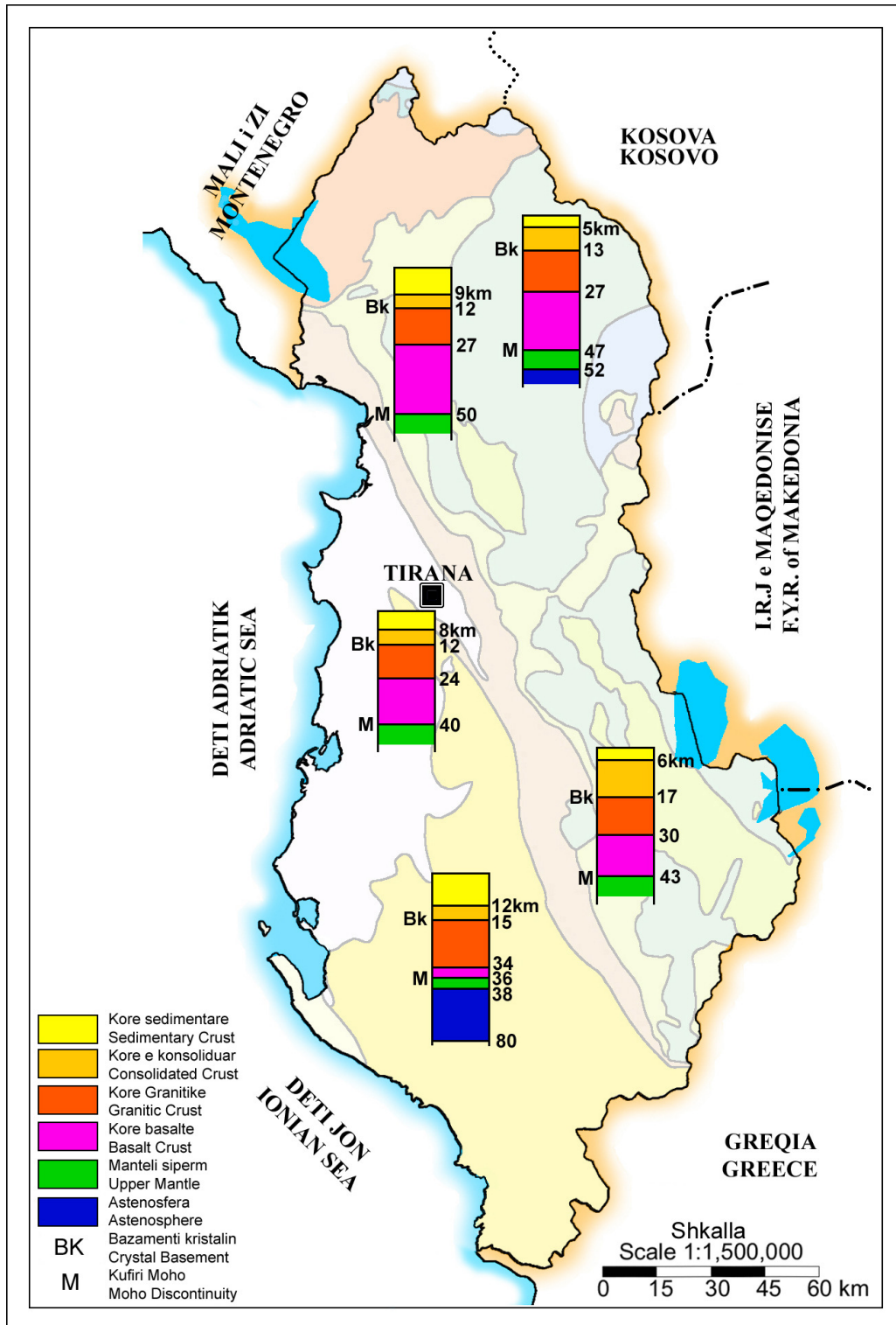


Fig. 3. Geologic structure of Earth's Crust and Upper mantle based on seismological studies (data taken from Koçiu S. 1989). The numbers given in the column show the velocity of the seismic waves, in km/s).

EARTH CRUST CONFIGURATION

Seismological studies and gravity and magnetic survey data have reflected the Earth Crust configuration (fig. 2; 3; 4, 8 and 21), (Aliaj. 1987, Arapi 1982, Bushati 1988, 1997, Chiappini et al, 1996, Duka et al, 1991, Frasheri et al. 1998, 2000, Koçiu 1989, Langora et al. 1983, Lubonja et al. 1968, Lulo et Bushati 1999, Sulstarova 1987, Veizaj 1995, Veizaj et Frasheri 1995). The structure of the Earth Crust according to the refraction seismic is presented in fig. 2. Rocks with a seismic wave velocity of 5.9- 6.2-km/sec present lower layer of the sedimentary crust. These rocks have a much consolidated structure. The regional gravity trend in Albanides is reflected in the influence of the Moho discontinuity. From Eastern part of the Albanides to the Adriatic Sea Shelf, generally it is observed an increasing of the gravity force (Fig. 5, 8 and 21). In the geological-geophysical profiles Albanid 1 and Albanid-2 (Fig. 8 and 21) is presented the decreasing of the depth of roof of the Moho discontinuity of the Adriatic Sea region. The Moho discontinuity plunges from 25 km in the central part of the Adriatic Sea (Finetti. and Morelli, 1972) to 43- 52 km at eastern part of Albanides. According to the interpretation of the magnetic regional anomalies resulted that top of the crystal basement plunged toward the littoral of the Albanides up to central areas of the Albania (fig. 8 and 24).

In the Albanides are fixed four third order trend of Bouguer anomalies of the low order: two maximums two minimums (Fig. 5, 6). Main gravity maximum is extended over the northeastern part of Mirdita tectonic zone and that of Korabi. Second maximum is located at Vlora district, in southwestern part of Albania. It is very important observation that this maximum has a strike sub-transversal with geological structures of the Ionian tectonic zone. These regional gravity maximums are attributed to a crust thinning toward the Mirdita tectonic zone and in Vlora district (Fig, 8, 21). The same phenomenon is observed in the south of ophiolitic belt of Mirdita tectonic zone to the Hellenides (Cadet et al. 1980). Main gravity minimum is extended from southeastern region of Albania to the northwestern littoral of Albania. Second minimum is located at Alps tectonic zone, by a strike in the SE-NW direction.

These anomalies are interpreted as caused by the fluctuation of the depth of roof of Moho discontinuity, and reveal a block construction of the crust, which coincides, fully with the results of seismological studies (fig.2). This tectonic construction of the deep levels of the earth crust in Albanides finds its reflection even in the scattering of the magnetic fields (fig. 7).

The Earth crust in Albanides is interrupted by a system of longitudinal fractures in NW - a SE direction and transversal fracture that touch the mantel (fig.6). Some of them separate even the tectonic zones. With deep fractures are linked geothermal energy of the Albanides. According to the geothermometer data results that the water temperature reaches to 220-270°C, in the primary reservoir, where the water has been heated, at the depth 12 – 13 km.

Earth crust setting of the Albanides conditioned the distribution of the geothermal field and energy. In the Heat Flow Density Map of Albania are observed two characteristics (Fig. 9) (Çermak et al. 1996, Frasheri 1993, 2000, Frasheri et al. 1995; 1998, 1999):

Geothermal gradient changes from western to the eastern part of the Albania, and in the depth, too. The gradient values vary from 15-21.3 mK/m in Pre-Adriatic Depression. According to the modeling results, deeper than 20 km are observed decreasing of the gradient. This change of the gradient coincides with the top of the crystal basement. In the ophiolitic belt of the Inner Albanides, the geothermal gradient at north eastern and south eastern part of the Albania has a value up to 36 mK/m. Decreasing of the gradient are observed deeper than 12 000 meters in this side of Albania, at the top of the Triassic salts deposits (fig. 8). In the both lines are observed that the temperatures in ophiolitic belt are higher than in the sedimentary basin, at the same depth.

In the Heat Flow Density Map of Albania (fig. 9), it is possible to observe two particularities of the scattering of the thermal field of the Albanides:

Firstly, 42 mW/m² is the maximal value of the heat flow in the External Albanides. At the eastern part of Albania, the heat flow density values are up to 60 mW/m². Radiogenic heat generation of the ophiolites is very low. In these conditions, increasing of the heat flow in the ophiolitic belt, are linked with heat flow from the depth. According to the Alb-1 line, the granites of the crystal basement, which have the possibilities for the great radiogenic heat generation represents the heat source. In ophiolitic belt, it is observed decreasing of the Moho discontinuity depth.

Secondly, in the ophiolitic belt are observed some hearth of higher heat flow density. Heat flow anomalies are conditioned by intensive heat transmitting through deep and transversal faults. These fractures are conditioned location of the geothermal energy sources. According to the calculation of different geothermometers, the aquifer estimated temperatures are 144 to 270°C. Based on the geothermal modeling, one can suppose that thermal waters rise from 8-12 km deep, where temperature attains to 220°C.

These arguments show that crystal basement has a blocks character. Depth of the location of these blocks is shallower in Mirdita tectonic zone. Local heat hearths show the existence of the transversal faults and through these fractures is very high heat flow. Geothermal energy is linked with great heat flow through these fractures.

The crust setting and their dynamics are reflected in the geology of the tectonic zones of the Albanides, and their tectonic styles.

INTERNAL ALBANIDES

The tectonic zones of the Internal Albanides are extended in eastern part of Albania.

1. **KORABI** zone (K) continues in Pelagonian zone in Hellenides and Golia zone in Dinarides. In Korabi zone the field of Bouguer anomaly is normal and this reveals that the structures are of low orders (Fig.4). The quiet gravitational zone of Korabi in the west is in contact with the anomalous zone laid over the ophiolites of Mirdita tectonic zone. The contact between Korabi and Mirdita zone does not coincide with the deep seismogenic structure Ohrid-Qarishte-Qafe Murre-Kukes.

In this zone the oldest formations of Albania do not, and are represented by sandstones, schistose-conglomerate and metamorphic limestone of Silurian, Devonian and Carboniferous ages, and sandstone-conglomerate and anhydrite of lower Permian-Cretaceous age. In some places there are also some volcanic and subvolcanic rocks with basic and acidic-alkaline contents. In the Korabi zone, some folds, thrust fault and cover rocks are presented.

2. **MIRDITA** zone continues with the Subpelagonian zone in Hellenides and Serbian zone in Dinarides. This zone represents a wide belt, which extends from NW-SE of the country. During the different orogenic phases, three tectonic units were formed in Mirdita zone. The lower tectonic unit is made up of ophiolites. Ophiolitic belt is characterized by intensive anomalies of the Bouguer anomaly and by a magnetic field with weak anomalies, that are very turbulent (fig. 5, 6, 7, 8, 10, 11, 12, 13).

There are three characteristics of this anomalous belt:

- Firstly, they are divided in two parts, in the north and south of Shengjergji flysch's corridor;
- Secondly, five gravity maximums, do not which are set after one another in a chain according to the anomalous chain from Tropoja-Kukes ultrabasic massif in the north-east part of Albania to

the Morava massif at south-eastern area. The anomalies have maximal amplitude up to 105 mgal and are separated with strong gradients. In the northern part, the anomalous belt takes a powerful turn of 60°-70° in the form of northern-astern-ward direction going to the Dinarides ophiolitic belt.

- Thirdly, higher anomalies are observed over the northern part of ultrabasic massifs of the eastern belt. The southern part of the Albanides ophiolitic belt has a more limited thickness and it keeps developing southwards in Hellenides.

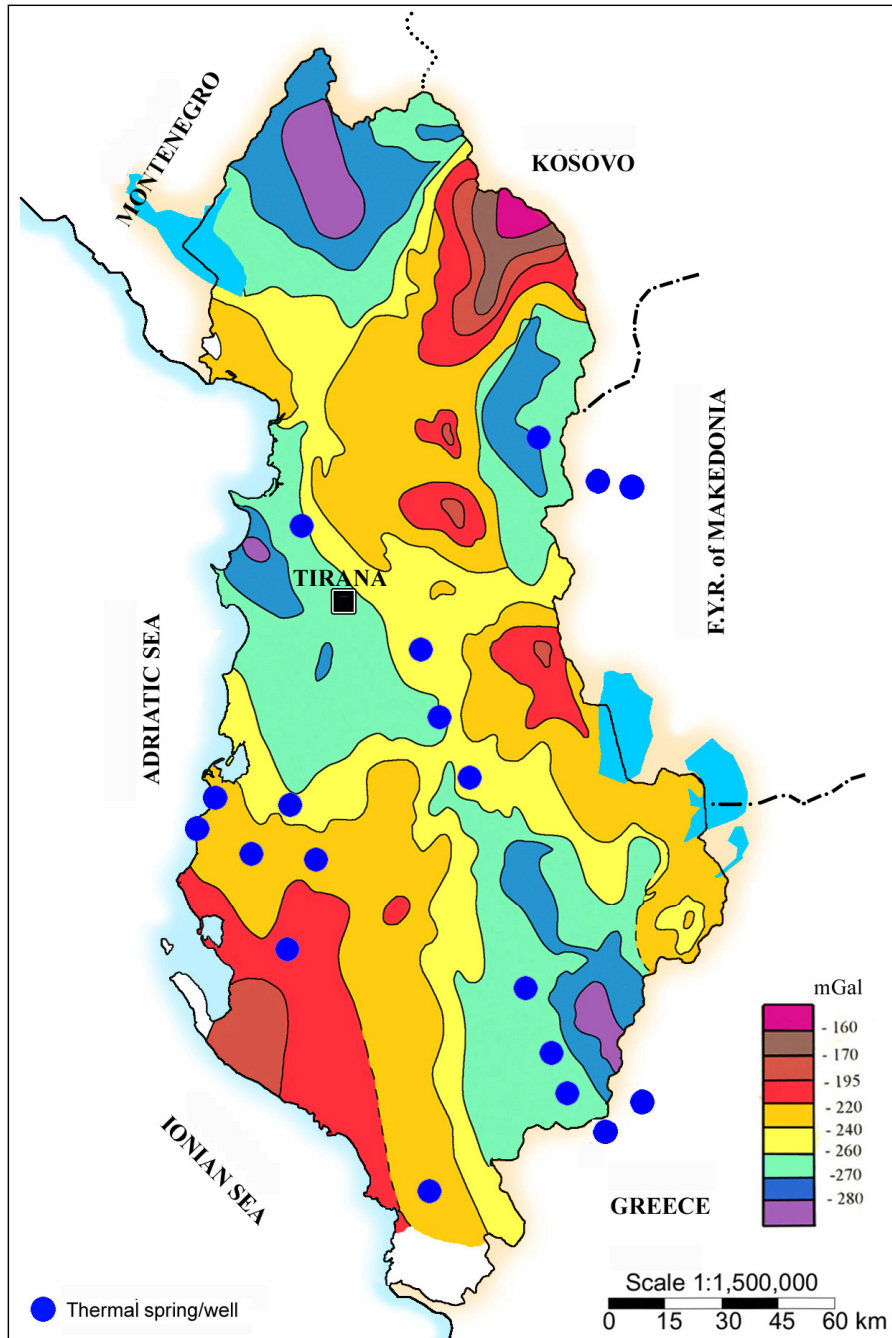


Fig. 4. Bouguer Gravity Anomaly Map of Albania. (After Bushati S.).

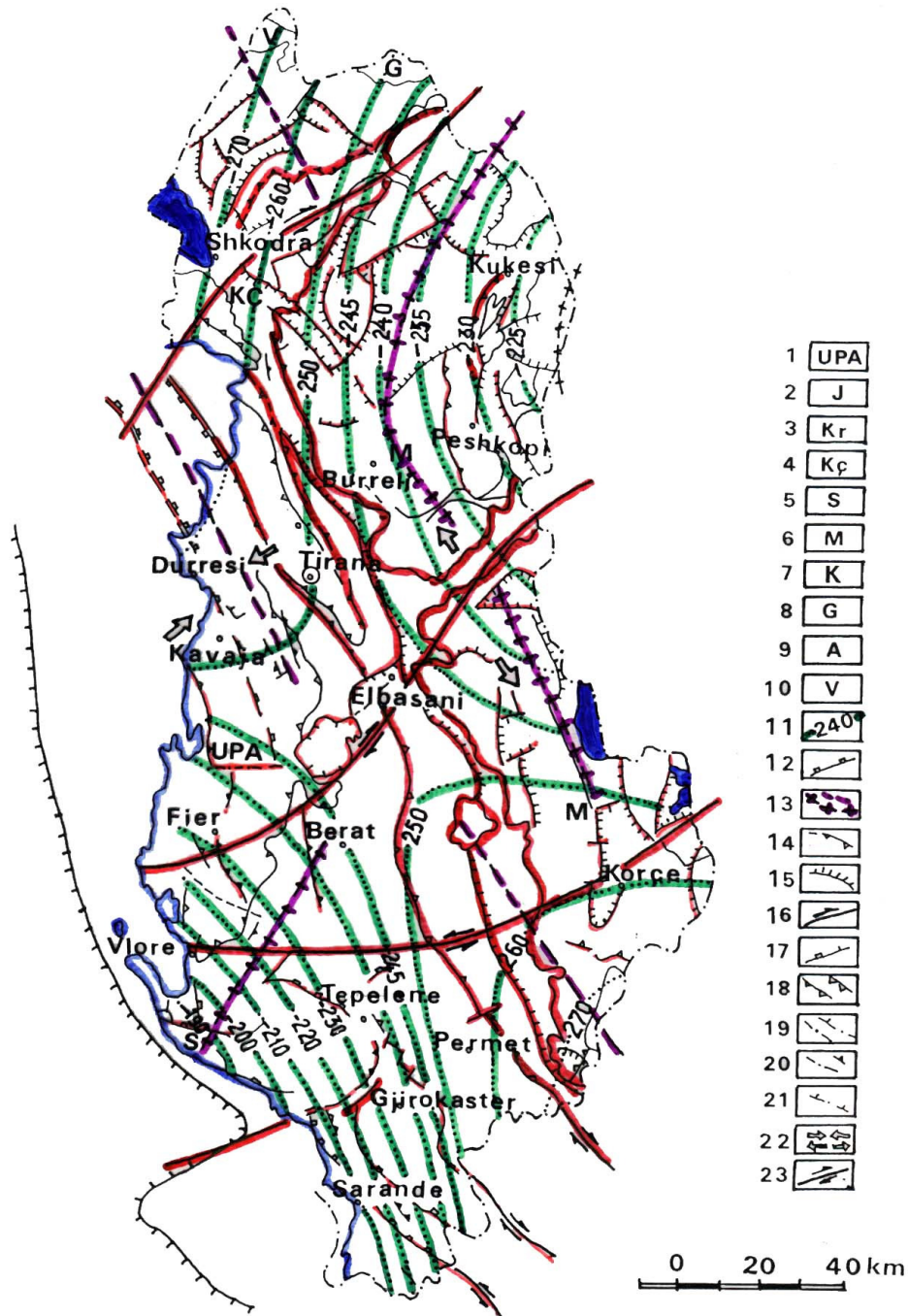


Fig. 5. The Complex Tectonic Map and map of the trend of 3rd degree of Bouguer Anomaly in the Albanides.

- 1- Peri-Adriatic Depression; 2- Ionian Zone; 3- Kruja zonw; 4- Krasta-Cukali zone; 5- Sazani zone; 6- Mirdita zone; 7- Korabi zone; 8- Gashi zone; 9- Albanian Alps zone; 10- Vermoshi zone; 11- trend of 3rd degree of Bouguer Anomaly; 12- Boundary between shelf and continental slope; 13- The axes of the up-left and down-left of the Mante; 14- Boundary of the Peri-Adriatic Depression with angular discordance; 15- Normal fault; 16- Pressure; 17- Limit of deformed envelopment during the neotectonic period; 18- Overthrust; 19- Flexure; 20- Flexure and faults based on geophysical data; 21- Inactive overthrust; 22- Compression (a) and (b) extension zones; 23- Deep faults.

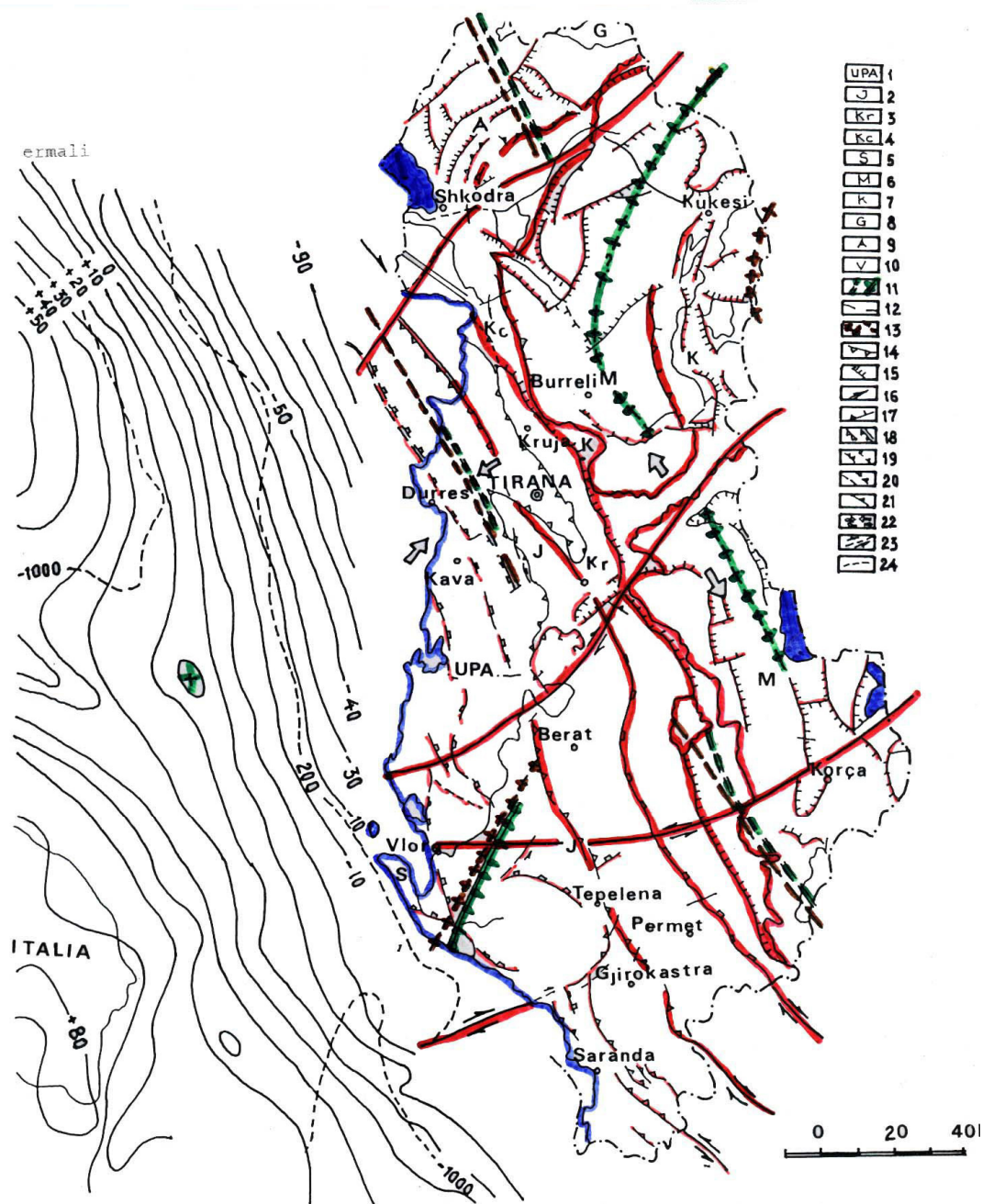


Fig. 6. The Complex Tectonic Map and axes of the Bouguer anomaly in the Albanides and in continental plate of the Adriatic Sea.

1- Peri-Adriatic Depression; 2- Ionian Zone; 3- Kruja zonw; 4- Krasta-Cukali zone; 5- Sazani zone; 6- Mirdita zone; 7- Korabi zone; 8- Gashi zone; 9- Albanian Alps zone; 10- Vermoshi zone; 11- The axes of the Bouguer Residual Anomalies, positive (a) and negative (b); 12- Isoanomals of the Bouguer Anomaly in the Adriatic and Ionian Sea (after Morelli C et al. 1969); 13- The axes of the up-left and down-left of the Mante; 14- Boundary of the Peri-Adriatic Depression with angular discordance; 15- Normal fault; 16- Pressure; 17- Limit of deformed envelopment during the neotectonic period; 18- Overthrust; 19- Flexure; 20- Flexure and faults based on geophysical data; 21- Inactive overthrust; 22- Compression (a) and (b) extension zones; 23- Seismogene deep up-rupt; 24- Isobaths of the water depth, in meters.

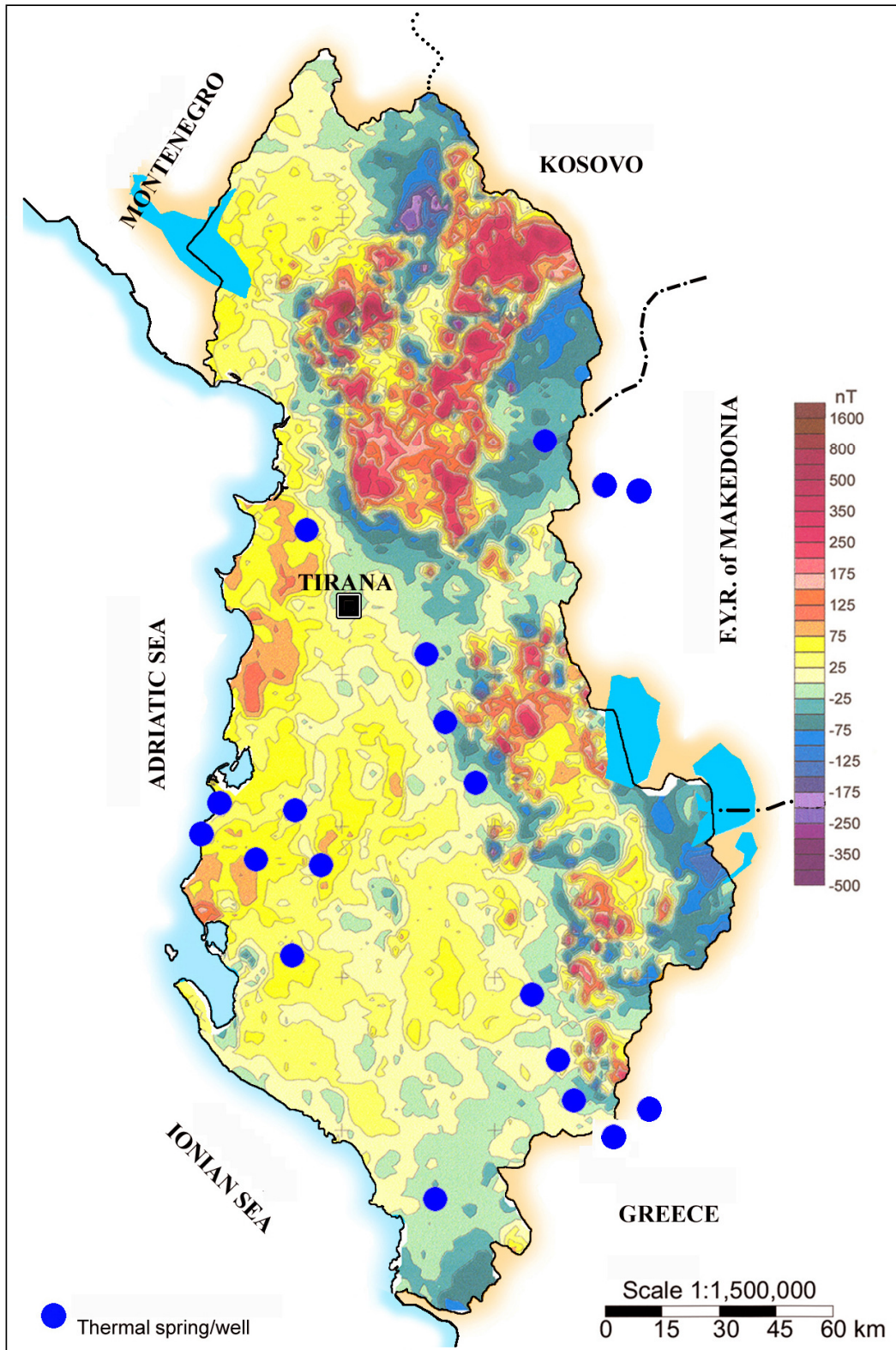


Fig. 7. Total Magnetic Field map of Albania (After Bushati S., 1987).

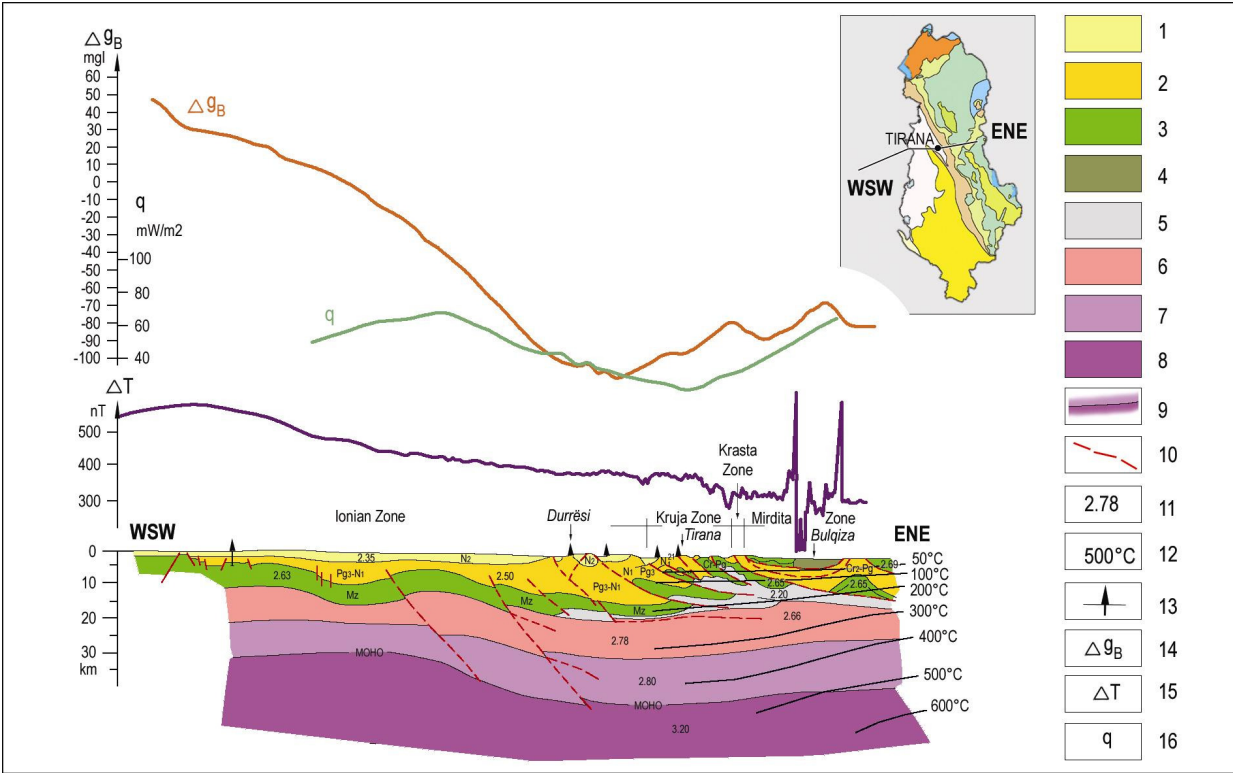


Fig. 8. Geological-geophysical profile Albanid-2: Falco Adriatic Sea- Durrës-Tirana- Peshkopi (The gravity data for the Adriatic Sea after Richetti, 1980).

1. Pliocene Substratum; 2- Substratum of Serravalian Molasses-Paleogene flysch (Pg₃) over the limestone; 3- Lower - Middle Paleogene (Pg₁₋₂) - Triassic carbonatic facies; 4- Ultrabasic rocks; 5- Permian evaporites; 6- Crystal basement; 7. The basalt Earth Crust 8. Mantle; 9- Moho Discontinuity; 10. Depth up-rupt; 11- Density value of the rocks, in g/cm³; 12- Temperature, in °C; 13. Deep wells; 14. Δg_B- Bouguer Gravity Anomaly; 15. Total Magnetic Field Anomaly; 16. Q- Heat Flow Density.

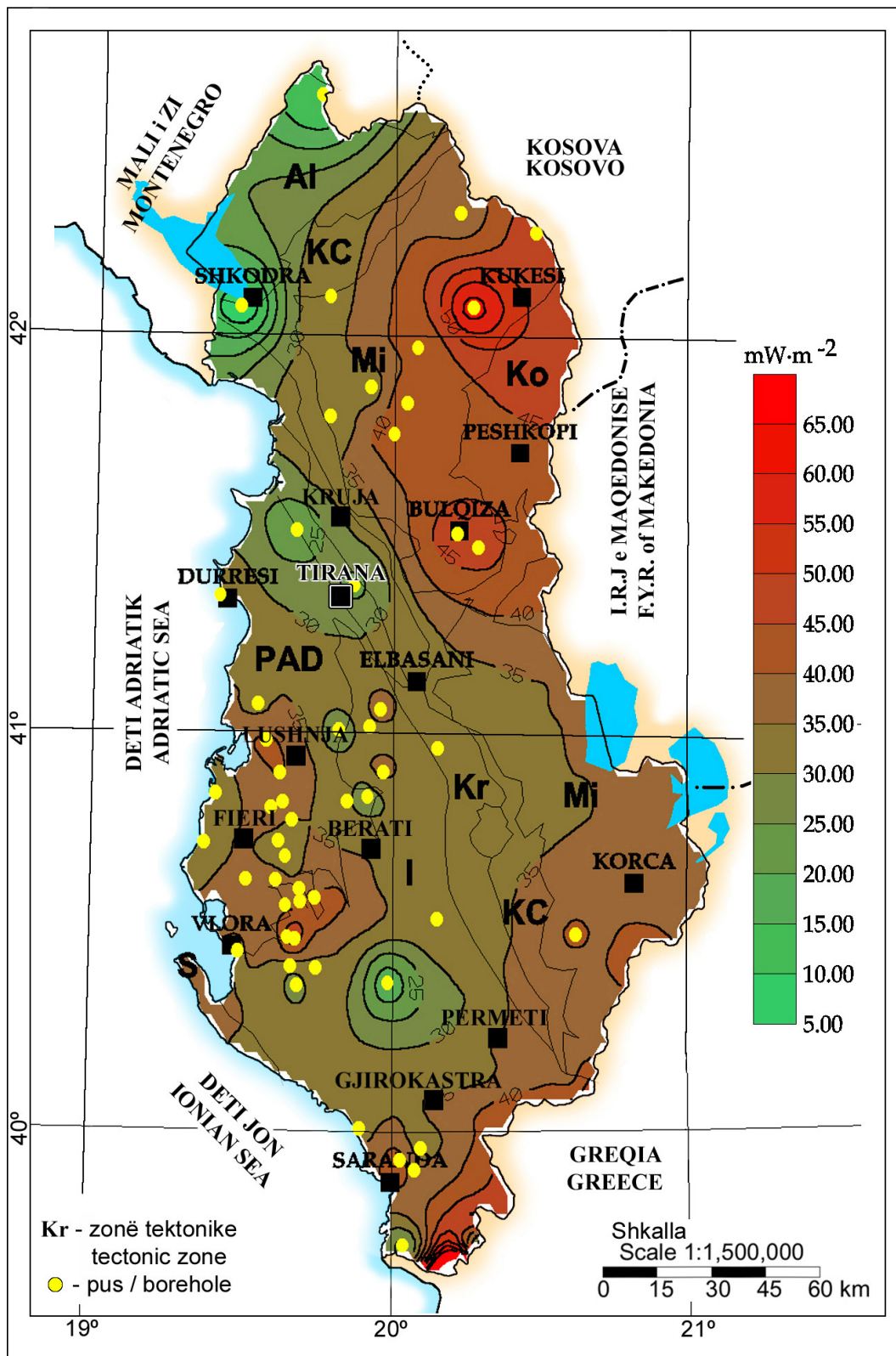


Fig. 9. Heat Flow Density Map of Albania (After Frashëri A. et al., 1995).

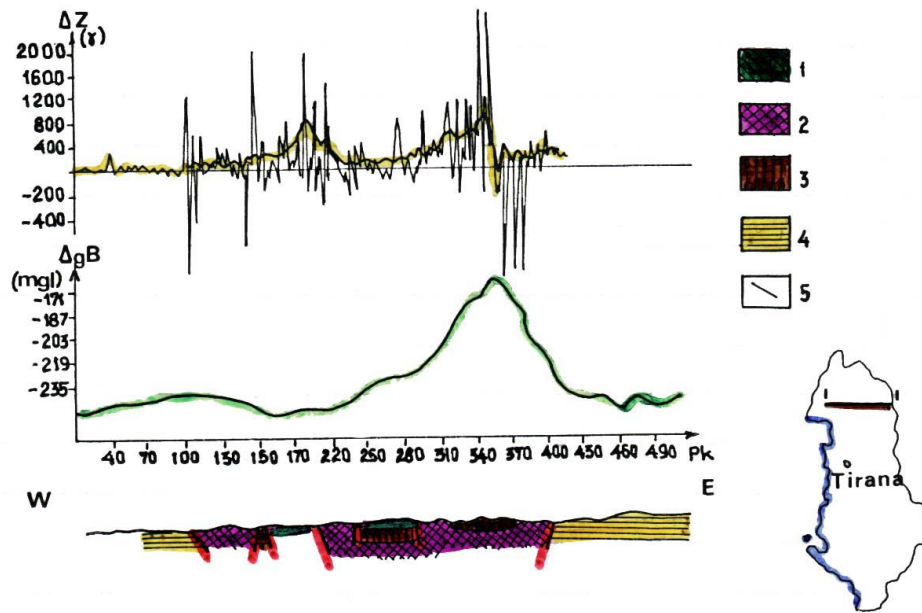


Fig. 10. Geological-geophysical Shkodër-Kukës profile.
 1. Effusive rocks; 2- Ultrabasic rocks; 3- Gabbro; 4- Sedimentary formation; 5- Disjunctive tectonic.

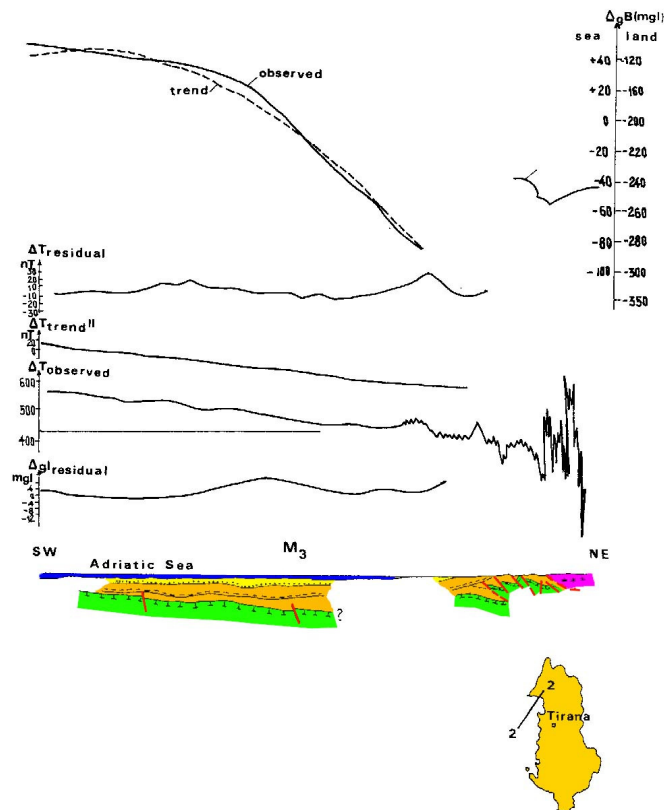


Fig. 11. Geological- geophysical profile: Adriatic Sea- Vrith.

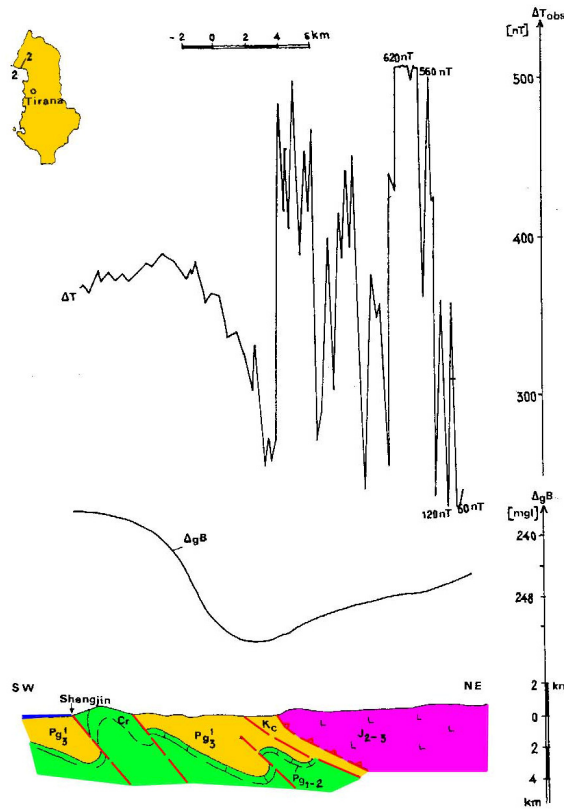


Fig. 12. Geological-geophysical profile: Shëngjin- Vrith.

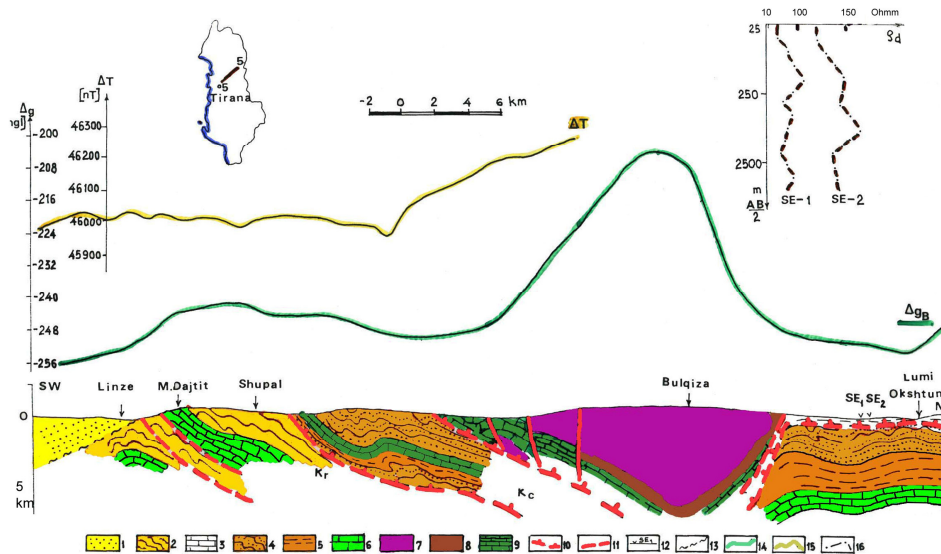


Fig. 13. Geological-geophysical profile: Tirana- Bulqizë- Shupenzë.

1. Terrigenous Tortonian Deposits; 2- Paleogene flysch deposits; 3- Upper Cretaceous-Paleogene Limestone; 4- Titiian- lower Cretaceous flysch deposits; 5- Upper Triassic- lower Triassic limestone; 6- Radiolaritic limestone with silic radiolarities; 7- Ultrabasic rocks; 8- Effusive rocks; 9- Limestone with siliceous of middle Triassic- lower Jurassic; 10- Overthrust plave; 11- Up-rup tectonic; 12- Electrical sounding centers; 13- Unconformity surface; 14- Bouguer anomaly; 15- Magnetic anomaly; 16- Electrical sounding resistivity curve.

Falko-Tirana-Bulgqiza profile traverses all the tectonic zones of Albanides (fig.8, 13). Along this profile the Bulgqiza ultrabasic is asymmetrical, with maximum thickness of about 6 km.

Two VES indicate that the eastern part of this massif is dipping to the west of the eastern board of Bulgqiza massif is proved by two vertical electrical soundings. According to these soundings, up to the depth of 2500 m, there are not observed high resistivity rocks, which can be identified with the ultramaphic rocks. (Fig. 13).

The separation of the anomalous belts of the gravity and the magnetic forces in the Shengjergji flysch's corridor, bringing evidence for the presence of Diber -Elbasan - Vlora transversal fracture, which has played a significant role in the geology of Albanides. In Shengjergji flysch corridor no magnetic anomalies are fixed, which would testify absence of the presence of ultrabasic rocks in the east of massif's margins and under the flysch deposits (fig. 14). The Bouguer anomaly in this region is due to the presence of limestone anticline under the flysch. Vertical electrical soundings have revealed that flysch deposits have a thickness of 2000 - 2500m.

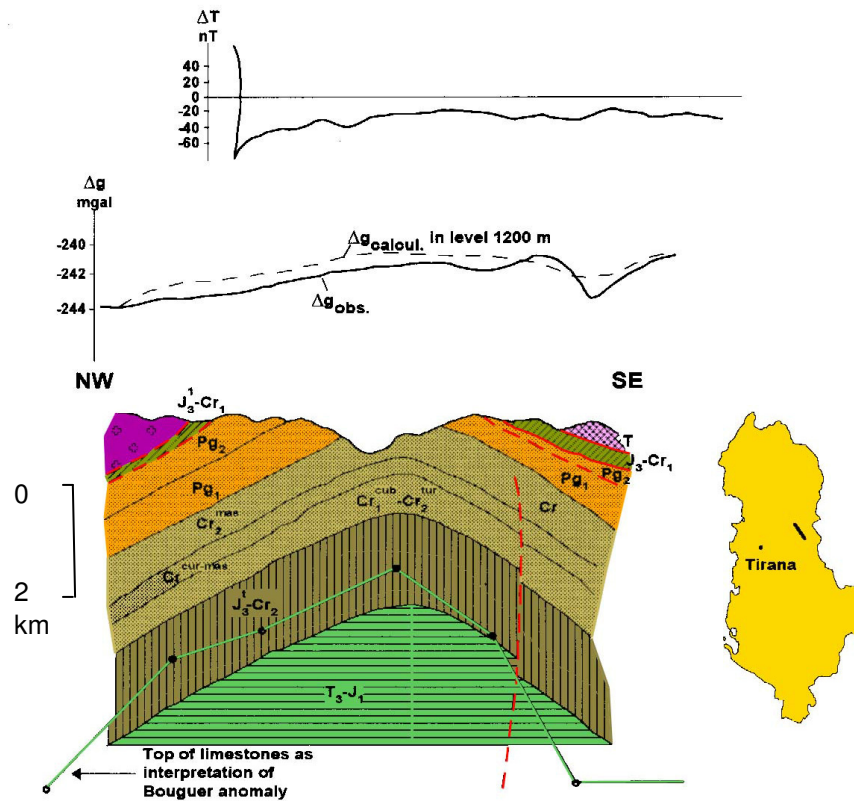


Fig. 14. Geological-geophysical profile through Peleogene and Cretaceous flysch exposures of Okshun window.

Abbreviations: T- Triassic; J- Jurassic, Cr- Cretaceous, Pg- Paleogene.

The thickness of the ophiolitic belt becomes 14 km in its northeastern extreme, in the ultramaphic belt of Kukes. Towards west and southeast its thickness reduced to 2 km (Fig. 10)

The northwestern sector of the ophiolitic belt is extended in the east of Shkodra town (fig. 10, 11, 12). The intensity of gravity and magnetic fields forces is reduced from seashore towards the east. The amplitude of the gravitational anomaly over the Gomsiqe ultrabasic massif is 12

mGal, which is four times smaller than in the anomalies in the eastern belt of ultramaphic massif. This indicates that the ophiolitic belt is thinner to the west of western part of the ophiolitic belt. As it is seen from the graphic of the magnetic anomaly presented in the profile, shows that the ophiolites contact here dips in eastern direction with an angle about 45° .

This interpretation is presented the argument related to the covering character of the western contact of ophiolites belt in Mirdita zone, under which the formation of Krasta-Cukal zone is laid. This geological setting of the nappe character of the ophiolitic belt explains. Also, the fact that, between Mirdita and Krasta-Cukali tectonic zones, the seismological studies have not proved the presence of any deep fracture.

VES carried out in Burreli fosse indicate that the thickness of the neogene molasses is approximately 1500 m in the northern part of the basin (fig. 15). Under it there lies a geoelectrical layer with high resistivity which is identified with ophiolites. Under the ophiolites there is extended a layer with resistivity 100 Ohmm and thickness 500m. This layer is placed over rocks with high resistivity. This interpretation leads to the opinion those volcanoes-sedimentary formation lies over Triassic limestone. The seismic profile through this basin shows that under neogene deposits there lays a belt without seismic reflections, which is interpreted as linked with the ophiolitic formation. Under them, there lies a section with many horizontal seismic reflections, which testifies the presence of stratified section (fig.16). Similar structure is observed on seismic section. At greater depths seismological data indicate a P-wave velocity reversal in Mirdita zone (fig. 17).

All this proves that the ophiolitic belt of the Albanides is genetically unique and tectonically split into two subbelts along its length. Geophysical data are represented the arguments for overthrust character of ophiolitic belt.

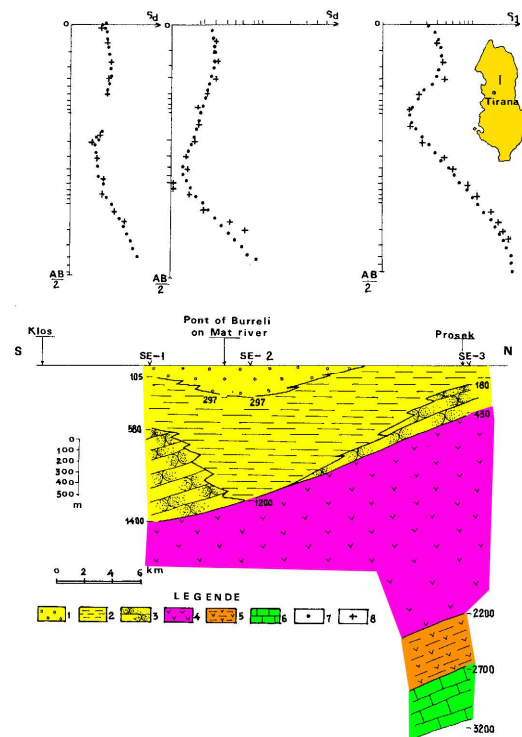


Fig. 15. Geoelectrical profile: Klos-Prosek over the Burreli Neogenic Fosse.

1. Quaternary gravel and conglomerate; 2- Detritic-argillaceous pack; 3- Sandstone-conglomerate; 4- Volcanic rocks; 5- Volcanogenic sedimentary pack; 6- Limestone; 7- Theoretic VES curve; 8- Observed VES curve.

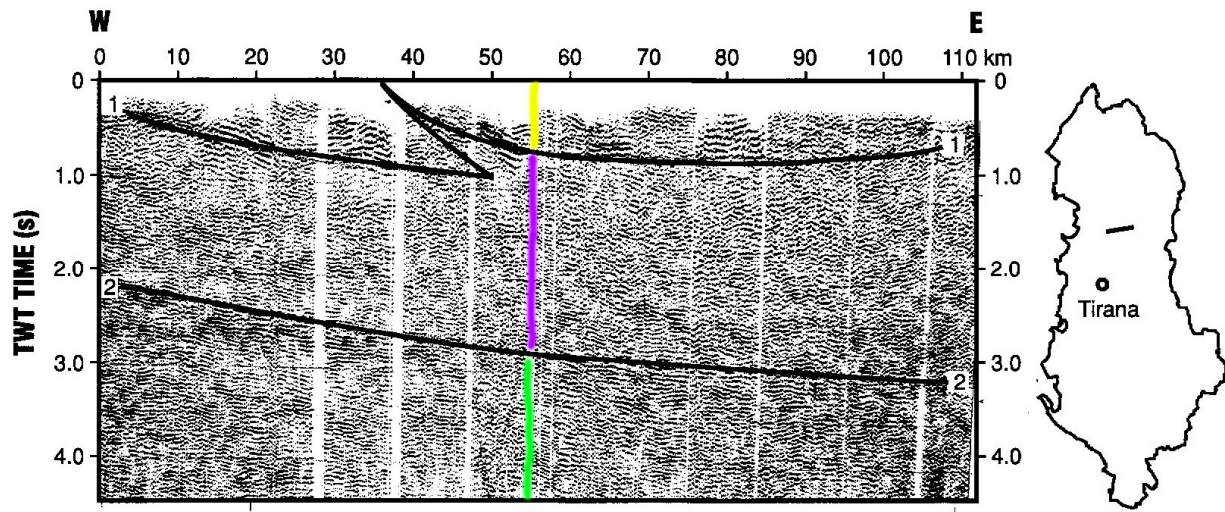


Fig. 16. Reflection seismic line in the Burreli Neogenic Fosse.

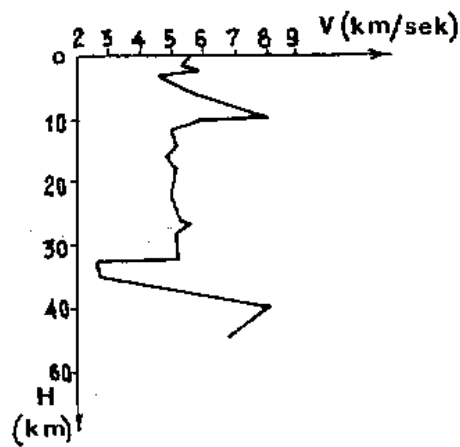


Fig. 17. Reversal of seismic P waves velocity from seismologic data (After Koçiu S., 1989).

3. **GASHI** zone (G). Beyond its border it continues into the Durmitori zone of the Dinarides. This zone includes metamorphic rocks, terrigenous rocks, limestone, metamorphic volcanites, basic intermediate and acidic rocks.

EXTERNAL ALBANIDES

The tectonic zones of the External Albanides are extended in western part of Albania.

1. **ALPS** zone (A). Analogue with Parnas zone in Hellenides and it continues with High Karst in Dinarides. In this zone the sandstone and the conglomerates of Permian are the oldest rocks. In general, Alps represents limestone monoclines, combined with smaller anticlines. A regional gravity minimum is extended in the Alps zone. Local gravity maximums are extended over the carbonatic structures (Fig. 18).

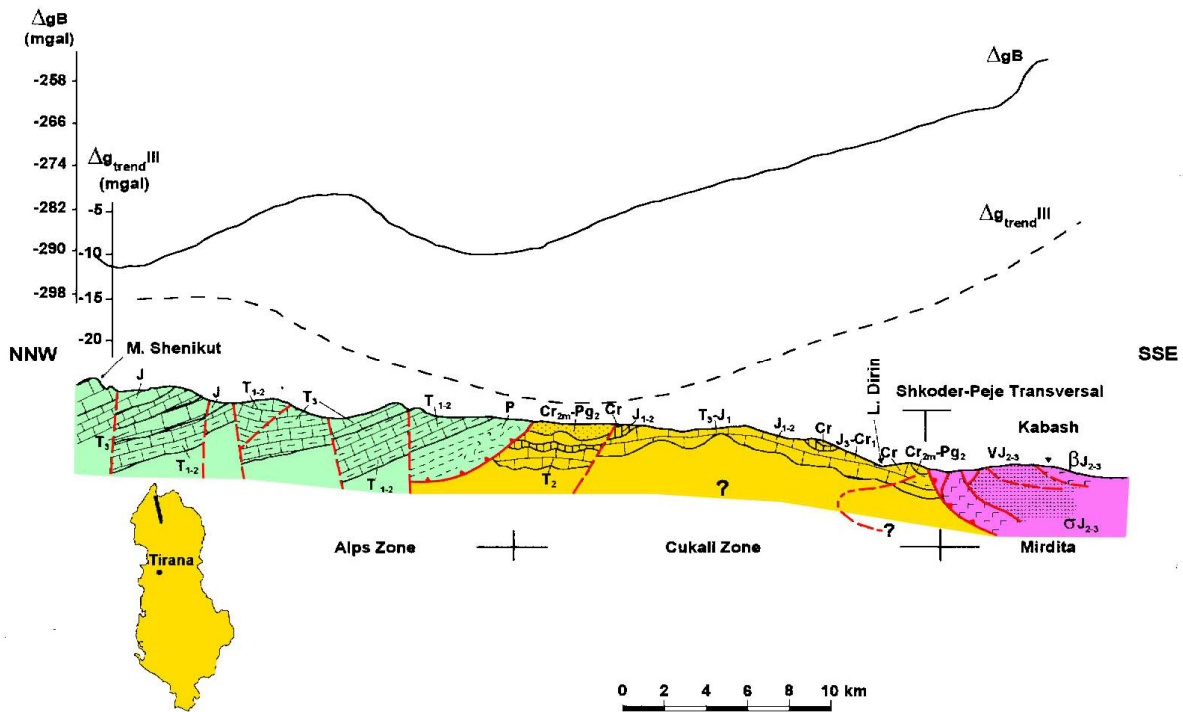


Fig. 18. Geological-geophysical profile: Alps-Cukali-Mirdita zones, over the Shkodër- Pejë Transversal.

2. KRASTA-CUKALI zone (K - C) continues in Pindos zone in Hellenides and Budva zone of the Dinarides. Krasta subzone lies like a narrow belt from Shkodra City in northwest region of Albania to Leskovik City at southeast region of Albania. This is an intermediately zone between the Internal and External Albanides. The longitudinal profile passes through the northwestern margin of ophiolitic belt, through Cukali and reaches to the Albanian Alps, interrupting Shkodër–Pejë transversal (fig.18). Residual Bouguer anomaly has a monotonous increase in the southeastern part of this profile. This increase is attributed to:

Firstly, the increased thickness of the Triassic to Cretaceous limestone formations towards the border of Cukali and Mirdita zones,

Secondly, the existence of ophiolites covered by Cukali formations.

Thirdly, the presence of higher density Paleozoic formations.

3. KRUJA zone (K) continues with Dalmate zone in Dinarides and in the south by Gavrova zone of the Hellenides. The reflector at 2.3-2.5 s partially parallel to the shallower ones is attributed to the top of the limestone of the structures of Kruja zone (fig.19). The reflector 1-1 is attributed to the top of J-C salts which are placed on top of the flysch. The seismic section shows a deep regional overthrust feature. In this case, terrigenous (flysch) section would lay under 2-2 reflection and going deeper we would expect new carbonate structures with perspectives for oil and gas discovery.

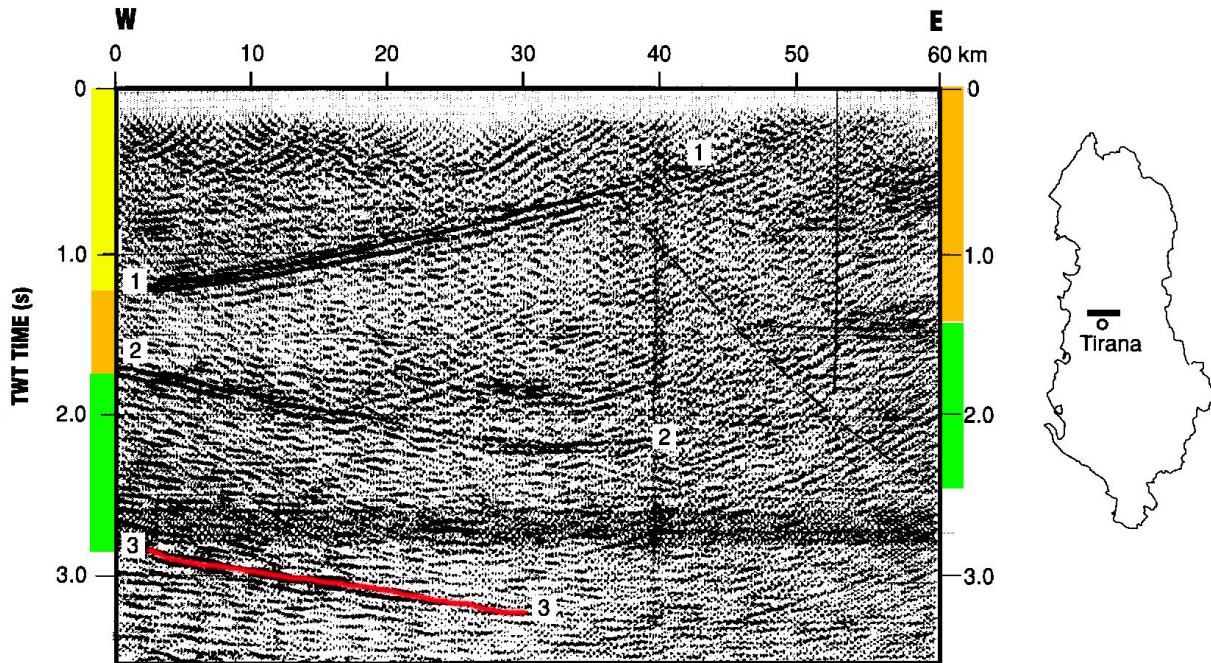


Fig. 19. Reflection seismic line in the Tirana Neogenic Depression. (After AKH).

4. **IONIAN** zone (Io) continues with the same name beyond borders in Greece. The Ionian zone occupies the southwestern part of Albania with SE-NW axis. This is the biggest zone of External Albanides and has been developed as a deep pelagic trough since upper Triassic (Fig. 20.a, b, c). The Permian- Triassic evaporites are the oldest rocks of this zone. This formation is covered by thick deposits formed by upper Triassic- lower Jurassic dolomitic limestone and Jurassic-Cretaceous-Paleogene pelagic cherty limestone. Limestone are covered by Paleogene flysch, Aquitanian flyschoidal formation, thin section of Burdigalian-Helvetian and partially of Serravalian-Tortonian, which mainly fill the synclinal belts. Burdigalian deposits are placed in angle discordance over anticline belts. This has brought about two- stage structure.

During the Liassic rifting affected External Albanides including Ionian zone and in this last were formed three tectonic blocks that represent the structural belts:

- Berati anticline belt, in the eastern margin of the zone
- Kurveleshi anticline belt, in the central part of the zone. According to the reflection seismic results have been compiled spatially map the carbonates.
- Çika anticline belt, which represents the western edge of the Ionian zone.

By the geological-geophysical data many anticline structures are delimited in the carbonate deposits inside these tectonic belts. Structures are fractured by longitudinal tectonic faults in western structure flanks.

The Berati anticline belt

The seismic acquisitions on this belt are performed in different times and by different techniques. The seismic situation in the time sections is very complicated and for the top of limestone, only some separated reflections in certain lines are recorded, especially in its central and western part, probably because limestone in this zone are deep and faulted. According to the seismic data, limestone in the central part are markedly broken.

This conclusion is well supported by the deep wells, drilled in Sqepur- Bistrovica area.

Kurveleshi anticline belt

All our conclusions are refereed mainly to carbonate formation, because those for the flysch section over the limestone, based on numerous facts, have produced wrong conclusions. The Kurveleshi belt is constructed by structures of various forms and dimensions, associated with developed tectonics up to thrusting of 5-10 km horizontal displacement, in the west of its structures as well as in eastern flanks is associated with diapiric eruptions. In regional seismic line II-II, which crosses the Ionian zone, from west to east, we can see clearly the perspective oil and gas-bearing structures.

Çika anticline belt

Çika anticline belt is constructed mainly by prolonged structures, with considerable dimensions, and associated with evaporate outcrops as in Xara, Fterra, Çika etc. Seismic works in this belt, date back to the start of exploration in Albania and still continue today. Earlier techniques for field acquisition have been those of one fold coverage, which continuously are improved, switching in the last years to multiple fold coverage.

Two main tectonic styles are distinguished in the Ionian zone: Duplex tectonic and imbricate tectonic styles. The backthrust faults have been caused by retrotectonic phenomena. The geodynamics of the Ionian zone is related with the evolution of the transversal tectonic faults. These faults have separated the Ionian basin in several blocks, since rifting time of lower and middle Jurassic. The periodical tectonic movement of the transversal faults has played an important role this overthrusting phenomenon, too.

In the regional reflection seismic lines through Ionian zone is clearly seen that during the structuring process of the Ionian zone, from upper Oligocene to Langhian, the underlying of southern Adriatic basin limestone and Sazani Zone has taken place (Fig. 22, 23).

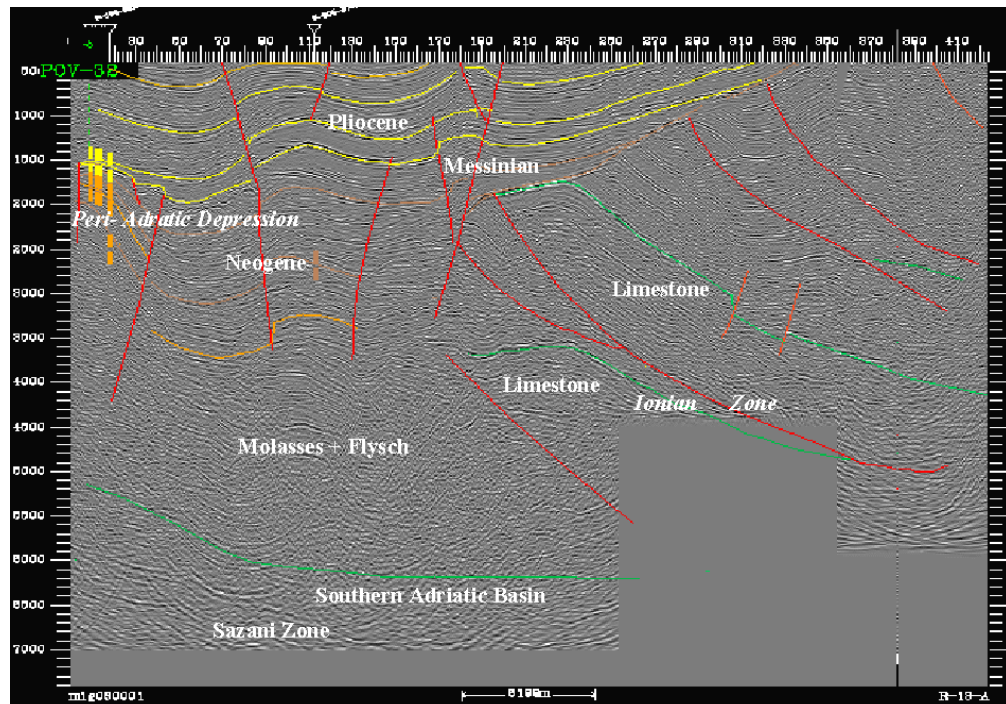


Fig. 20-a. Regional reflection seismic line in Ionian and Peri-Adriatic Depression. (After AKH).

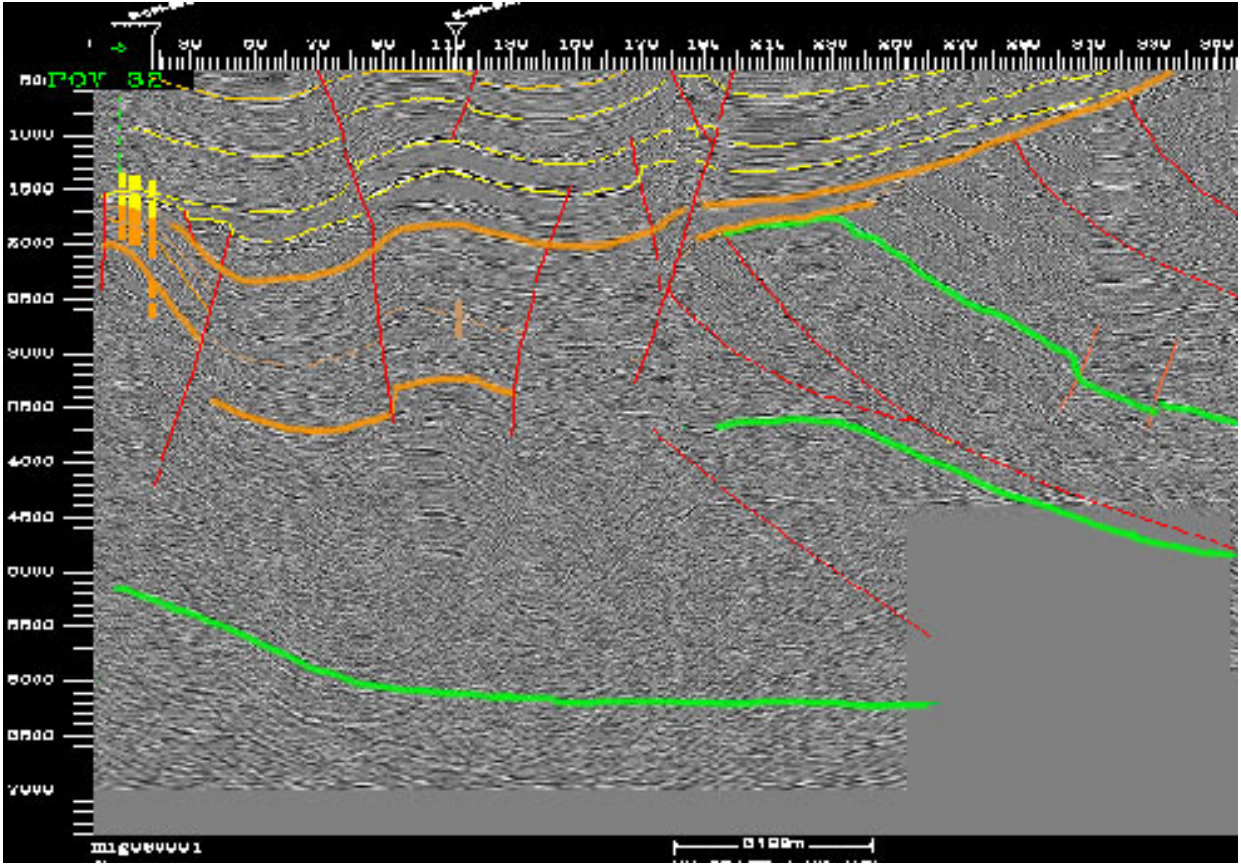


Fig. 20-b. Reflection seismic line in Ionian and Peri-Adriatic Depression. (After AKH).

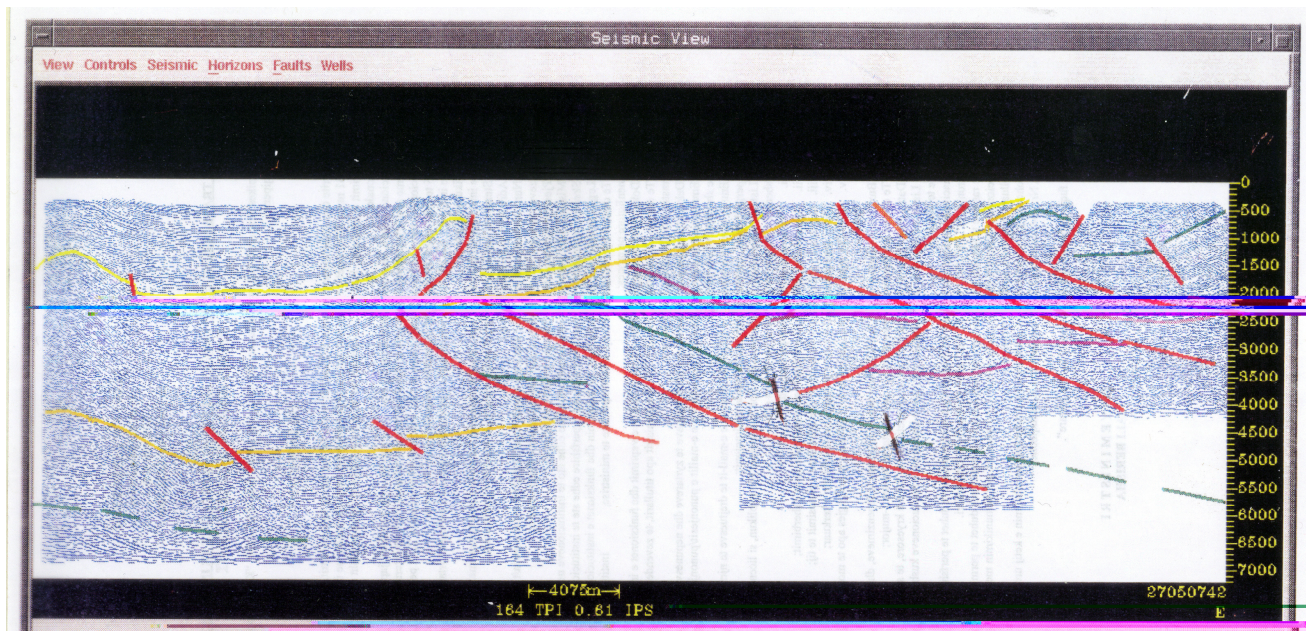


Fig. 20-c. Reflection seismic line in Ionian and Peri-Adriatic Depression (After AKH).

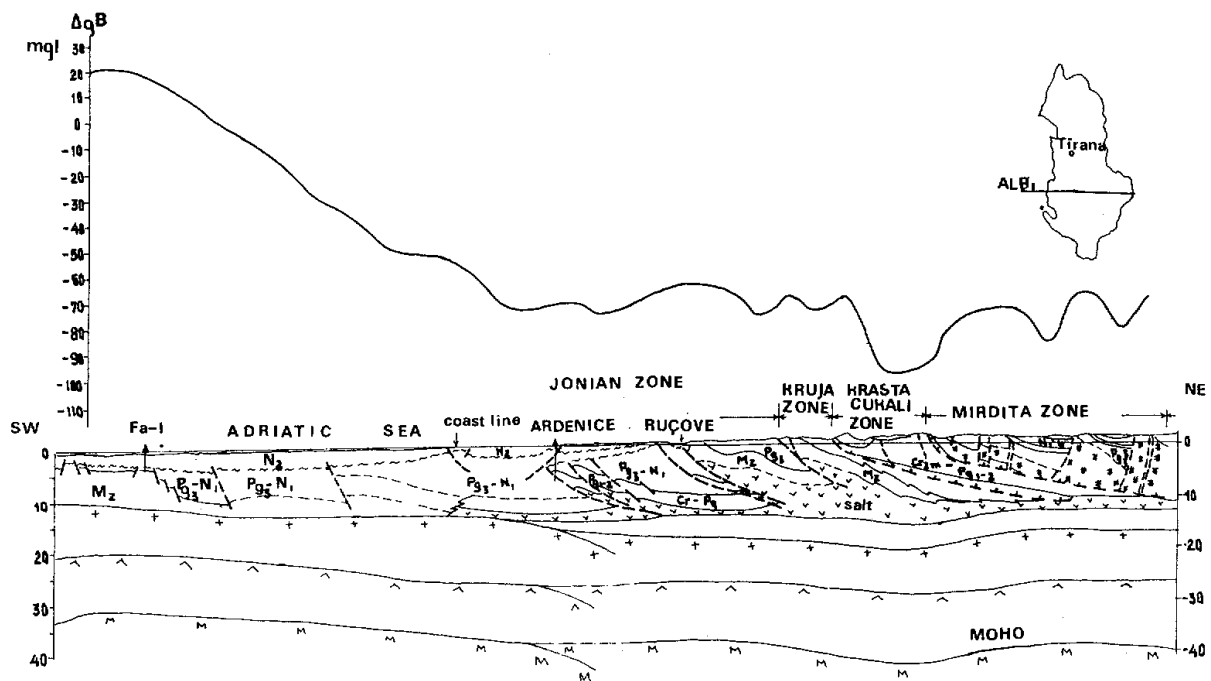


Fig. 21. Geological-geophysical profile Albanid-1: Falco Adriatic Sea- Seman-Kuçovë- Bilisht (The gravity data for the Adriatic Sea after Richetti, 1980). Legend as in the fig. 8.

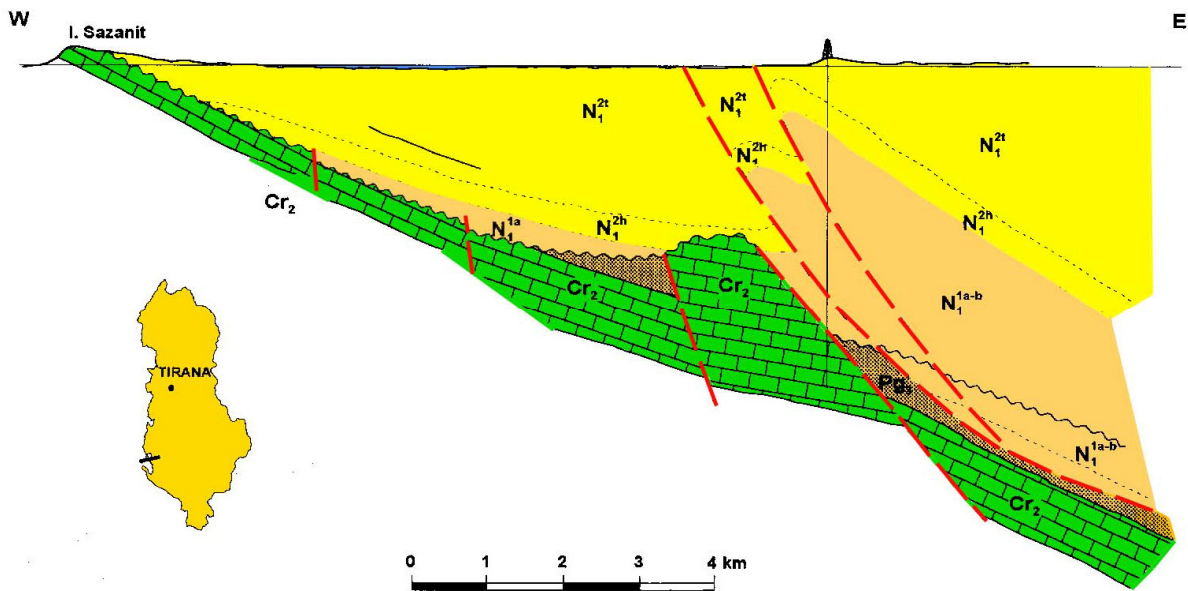


Fig. 22- Geological profile of Sazani-Zvërnec in Vlova district.

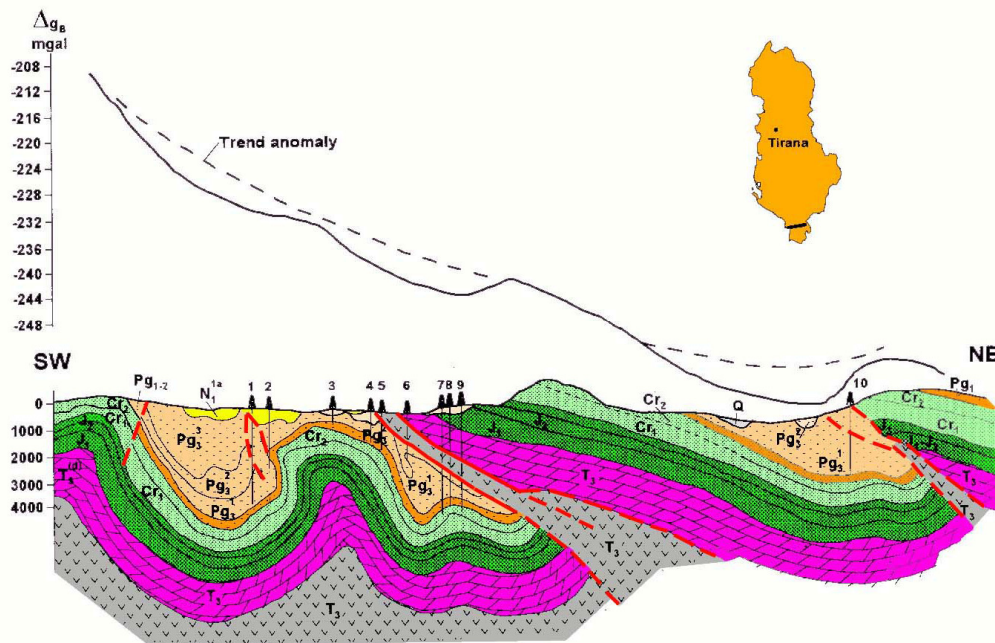


Fig. 23. Geological-geophysical profile: Saranda-Gjirokastra region.

Q- Quaternary; 2- N_1^{1a} - Aquitanian flyschoid formation; Pg_3 - Upper Oligocene flysch; Pg_{1-2} – Lowe-Midle Oligocene limestone; Cr_2 - Upper Cretaceous limestone; Cr_1 - Lower Cretaceous limestone; J_1 - Lower Jurassic limestone; J_2 -Middle Jurassic limestone; J_3 - Upper Jurassic limestone; T_3 - Dolomites of the Upper Triassic; T_3 - Upper Triassic with evaporites; Trend of the Bouguer Anomaly; Δg_B - Bouguer anomaly; 1, 2, ...,9- Depth wells.

5. **SAZANI** zone is the continuation of Apulian platform. A thick Cretaceous- Eocene limestone and dolomite section builds this). Marly deposits of Burdigalian are place transgressively over carbonatic formation (fig.22).

The interpretation of the recent geological, seismic and gravity data represents a new structural model and the tectonic styles of the External Albanides. Tectonic zones of the External Albanides are in compression tectonic regime since upper Jurassic-Cretaceous periods. Only in western part, Apulian zone and South Adriatic basin, are in continues extension tectonic regimen. Over thrusting style of the south-eastern part of the External Albanides, with a great southwestward overthrust of the anticline chains, the presence of the old transversal faults at the present are well known. The lubrication substratum is represented by evaporites during the over thrusting movement. The regional neotectonic phenomena are also the back thrusting tectonic in the Ionian and Sazani zones. The formed structural-tectonic models are represented the results of interference of two main effects, that of southwestward over thrusting and that of secondary and newly northwestwards over thrusting.

6. PERI-ADRIATIC DEPRESSION

Overlying Peri-Adriatic Depression covers the Ionian, Sazani and partly Kruja tectonic zones. This is a fore depression filled with middle Miocene and Pliocene molasses, which are mainly covered by Quaternary deposits (fig.8, 20, 21, 24). Tortonian- Messinian- Pliocene molasses consist of a considerable number of sandy-clay mega-sequences. From south-east to north-west, the thickness of the molasses increases, reaching 5000 m. Sandstone-clay deposits of

Serravalian and Tortonian are placed transgressively over the oldest ones, up to the limestone creating a two-stages structure (Fig. 20, 24).

During the molasses cycle, the structure and structural chains of the Ionian, Kruja and Sazani zones have increased the thrusting and back thrusting degree, as a result of a powerful tectonics development. This phenomenon often led to the formation of tectonic blocks, within the carbonatic section, of imbrication nature and to the partial and complete reaching of the expected anticline structures from the evaporites and the adjacent eastern structures.

The Albanian sedimentary basin continues even in Adriatic shelf with terrigene and carbonatic formations. In the different profiles (fig.8, 14) it is noticed that there exist some local Bouguer and magnetic anomalies in Adriatic shelf (Richetti, 1980). Some researches have reached the conclusion that the Apulian platform is tectonically quiet. The local gravity maximums coincide with minimums of the magnetic field: this is interpreted as due to the elevation of the top of carbonatic formation.

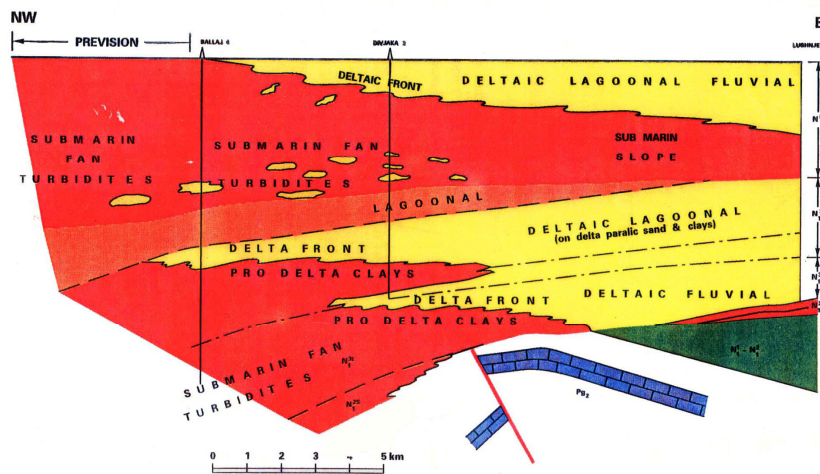


Fig. 24-a. Reflection seismic line: Divjaka brachianticline in Peri-Adriatic Depression. (After Dyrmishi C).

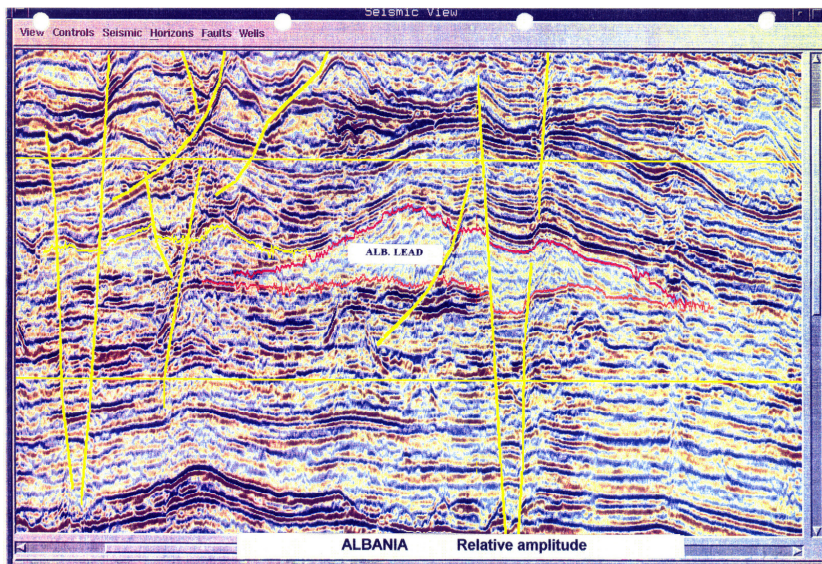


Fig. 24-b. Seismic line in Peri-Adriatic Depression (After AKH).

PALEOMAGNETIC REVIEW ON DYNAMIC EVOLUTION OF ALBANIDES

Dynamic evolution of the Albanides has its reflection in paleomagnetic data, collected from the paleomagnetic studies in Albania, which were performed during 90 years (Frasheri et Bushati 1995, Frasheri et al. 1995, Kane et al. 1999, Kissel et al. 1992, 1994, 1995, Mauritsch et al. 1991, 1994, Mauritsch 2000).

Paleomagnetic studies shows that Ionic and Kruja tectonic zones have support a joint clockwise rotation, with an angle $45-50^\circ$ during and after Eocene-Oligocene period. This rotation has been realized through two phases, by 25° every phase in the middle Miocene up to Plio-Pleistocene. Ionic and Kruja zones don't have any different rotation between each other. Vlorë- Elbasan-Diber don't divided zones with different rotations of the central and northern part of the Albania. Consequently, maybe observed practically continuously evolution of the External Albanides zones from upper Eocene up to present (Fig. 25).

In the upper Miocene section in Peri-Adriatic Depression has been observed that between Oligocene and upper Miocene, the External Albanides zones have been subduced a clockwise rotation of $10-15^\circ$. In the clay of Pliocene section at Central Albania was observed 10° rotation, which have been supported External Albanides zones during the upper Miocene and lower-middle Pliocene. Has been evidenced also a clockwise rotation of the External Albanides and Internal Albanides younger than Tortonian, in the relation with general apparent polar displacement path from the Africa and Eurasia (Fig.26, 27). Eocene limestone anticlines of the Renz and Kakariq area, which are located in the Shkoder-Peje transversal zone, have a rotation about 31° . Consequently, these two anticlines have a declination with 18° smaller than the declination of the Eocene limestone in the Central Albania. These two anticlines maybe have superposition of two rotations with inverse sense: clockwise rotation of 50° , which has been subduced all External Albanides structures and local counterclockwise rotation by 25° , which has rotated only these two anticlines that have a Dinaride strike.

Limestone samples from Albanian Alps at Selca area, in the north of Shkoder-Peje transversal, shows a counterclockwise rotation for 20° in relation with present north, the same value as in southern Dinaride's structures.

The analogue counterclockwise rotation as in Selca area, have also Jurassic limestone at southern Shkodra lakeshore. This fact shows that both these sections appertain to the same tectonic zone, in northern of Shkoder-Peje transversal area. This lineament has great tectonic influence over Cukali subzone, where have observed changes of the sense of from counterclockwise to clockwise rotation in very short distances. In the northwestern edge of the Mirdita zone, at the Komani area of ophiolitic belt, have been observed declinations, which show the clockwise rotation of the effusive rocks and sedimentary ones.

Shkoder-Peje lineament forms the transition between two zones: of counterclockwise rotation of Albanian Alps and Dinarides to its north and clockwise rotation of the Albanides and Hellenides to its south.

Magneto-biostratigraphic studies which have been performed at Kçira area in Mirdita zone, shows that in the Spathian-Anisian section have observed alternation of normal and inverse magnetization. Kçira Pole presents affinity with Western Gondwana after restoration for the Neogene (Muttoni G. et al, 1996).

Results of paleomagnetic investigation of the samples from ophiolitic belt in Internal Albanides, from Qafëzezi in south of Korça district to the Kalimashi area in Kukësi ultrabasic massif in the north-east of Albania, shows the same declination as the Hellenides ophiolitic belt.

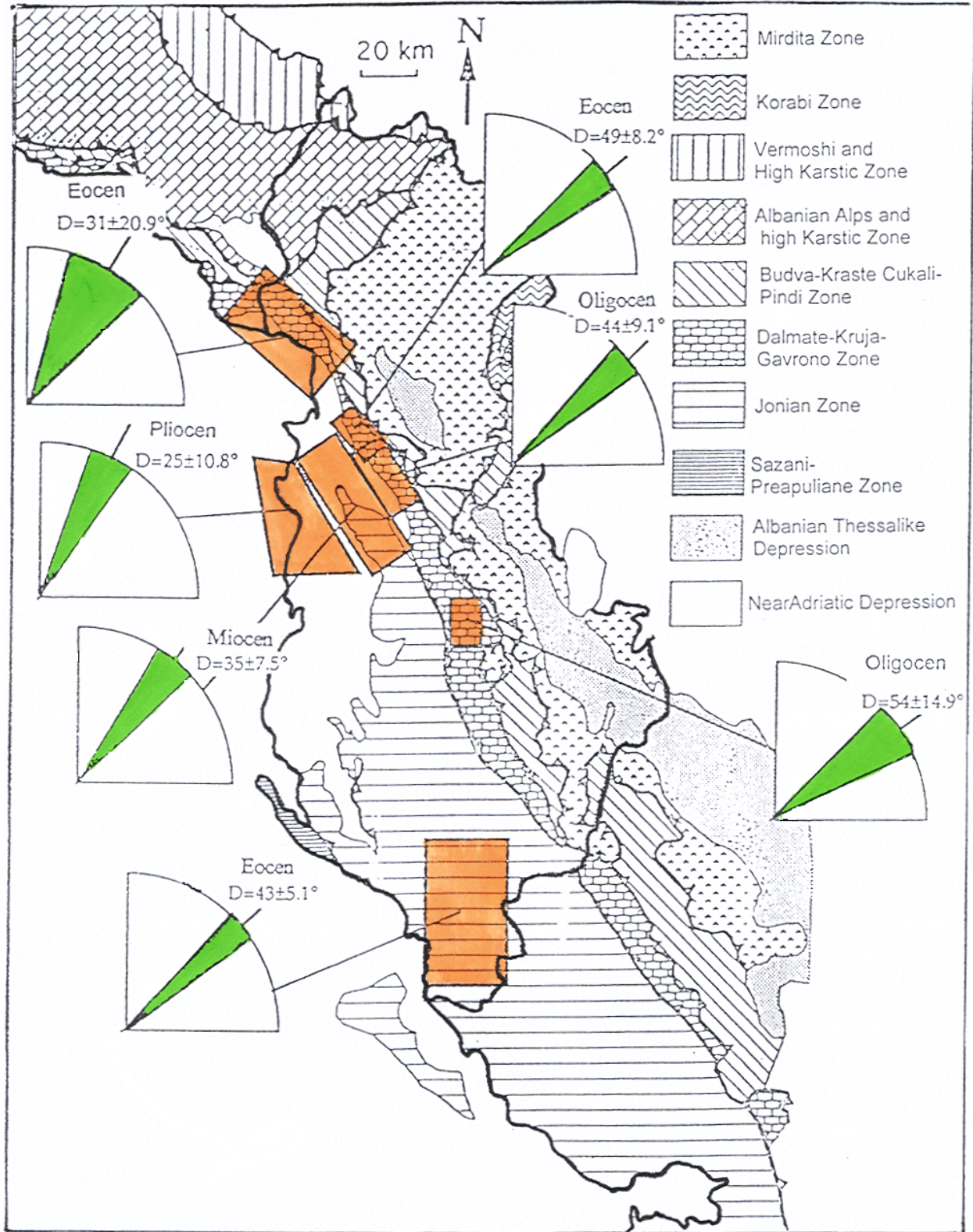


Fig. 25. Paleomagnetic Declinations Map of the External Albanides. (After Kisel C. et al. 1994).

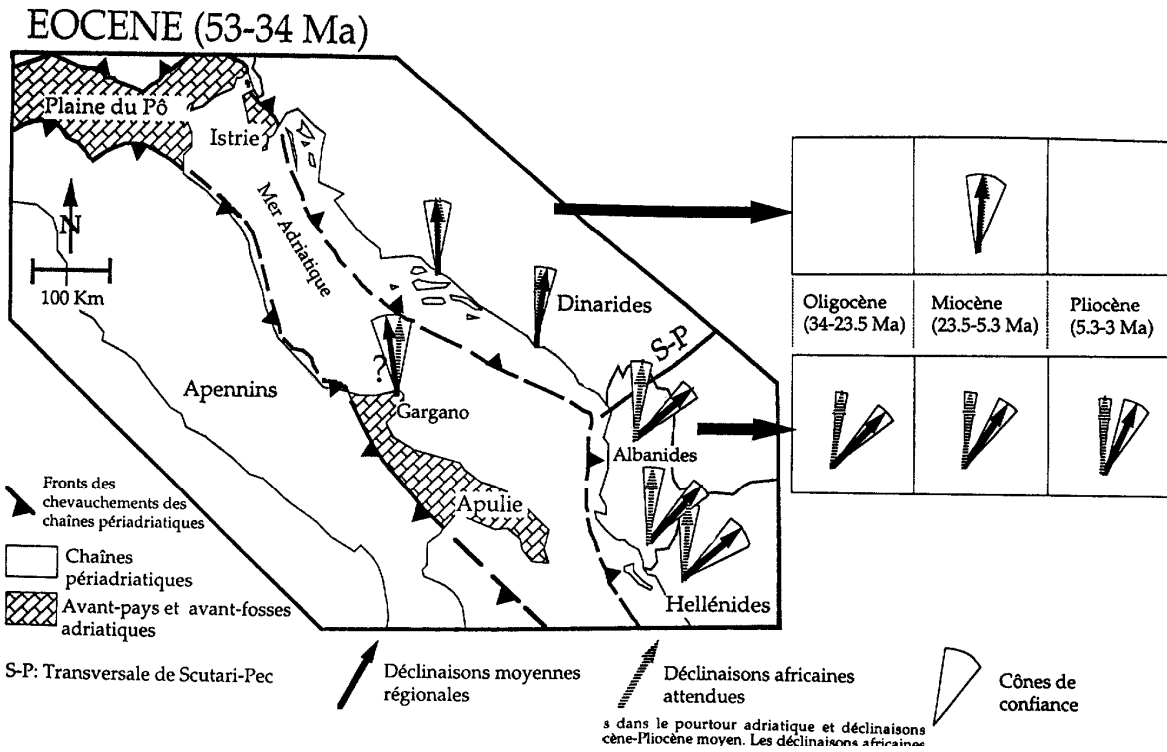


Fig. 26. Regional Paleomagnetic Declinations around Adriatic Sea and expected paleomagnetic declination for Africa during the Eocene-middle Pliocene period, (After Speranza F. 1995).

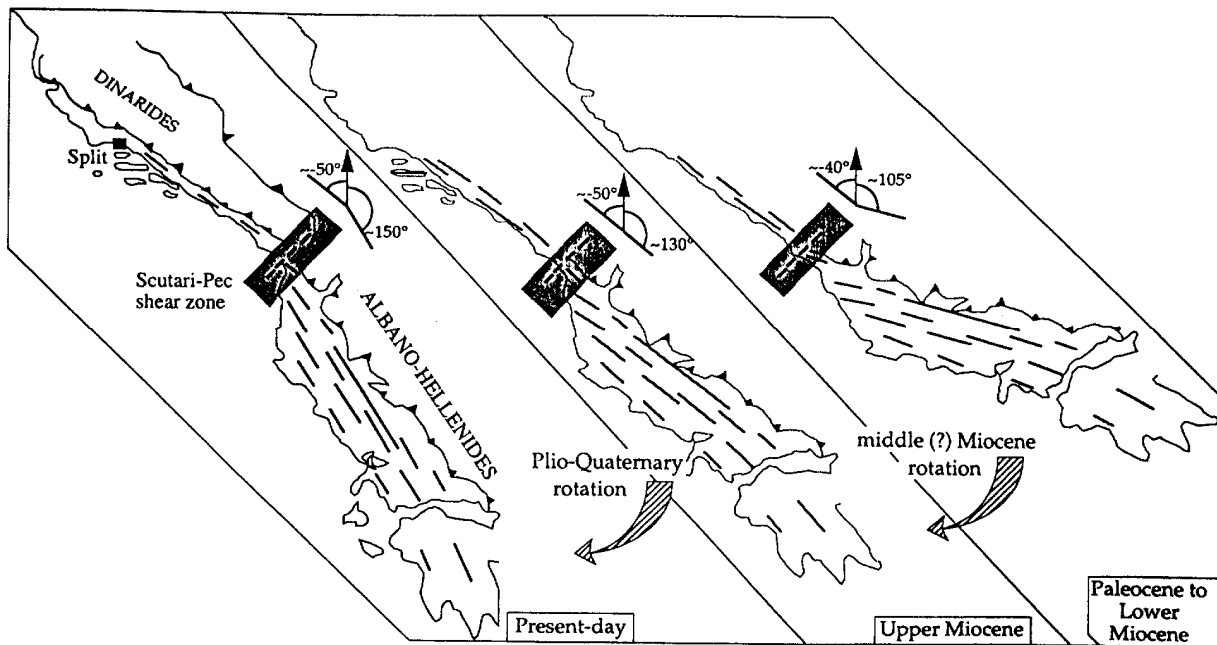


Fig. 27. Schematic evolution of the orientation of Albanides-Hellenides and Dinaride structures during the Cenozoic era, (After Speranza F. 1995).

CONCLUSIONS

1. Albanides are presented the assemblage of geologic structures, which are extended in the Albanian territory. They are placed between Dinarides in North and Hellenides in South. The geophysical and geological studies have proved the presence of some tectonic zones, situated in two big paleogeographic zones, in the Internal Albanides and in the External Albanides.
2. Earth Crust of the Albanides has a block construction. The Earth crust in Albanides is interrupted by a system of longitudinal fractures in NW-SE direction and transversal fracture that touches the mantel. Some of them separate even the tectonic zones. With deep fractures are linked geothermal energy of the Albanides.
3. The Mirdita ophiolitic complex causes an obvious gravity anomaly chain and a turbulent magnetic field, relatively of low intensity. These data show about the allochthone character of ophiolitic belt. The interpretation of the gravity data reveals a big thickness of the ophiolitic belt of 6-14 km on the eastern belt of the ultrabasic massifs, while it is decreased up to 2 km on the West.
4. Tectonic zones of the External Albanides are in compression tectonic regimen since upper Jurassic-Cretaceous periods. Western part, Apulian zone and South Adriatic basin is in continues extension tectonic regimen.
5. The geophysical data show that the orogene front of Albanides is emplaced in Adriatic Sea. The Ionian and Sazani zones continue for a certain of distance in the Adriatic Sea Shelf. Both these zones are extended over the Apulian platform.
6. The relations between the Internal and the External Albanides have a southwestward nappe character.
7. Paleomagnetic studies have demonstrated that assemblage of the Albanides margin has supported a clockwise rotation with amplitude about 45°, after upper Oligocene. This rotation has been realized by two phases, analogue with the phases, which are observed in the western margin of the Hellenides. Shkoder-Peje transversal is represented a transition zone between the clockwise rotation of the Albanides and Hellenides and counterclockwise of the Dinarides. Horizontal displacement is about 173 km in southern Albania, for the rotation pole located at Shkoder-Peje transversal.

REFERENCE

- Aliaj, Sh.; 1987: On some fundamental aspects of the structural evaluation of Outer Zones of the Albanides. (In Albanian, abstract in English). Bulletin of Geological Sciences, No. 4, pp. 3-21.
- Aliaj, Sh.; 1988: Neotectonic and seismotectonic of Albania. (In Albanian), M.Sc. thesis. Seismological Center, Acad. Sci. of Republic of Albania.
- Arapi, S.; 1982: Study of the distribution of gravity field of the External Tectonic Zones Ionian, Kruja and Sazani, in framework of the geological-geophysical exploration of the oil and gas bearing structures. (In Albanian). M. Sc. thesis. Polytechnic University of Tirana.
- Aubouen, J., Ndojaj, I.; 1964: Regards sur la géologie de l'Albanie e sa place dans la géologie des Dinarides. Bull. Soc. France (97) VI, pp. 593-625.
- Auboin, I.; 1973: Overthrust tectonic and their signification in the relation to geophysical models: on example of Dinarides, paleotectonic, past-tectonic, neo-tectonic. B.S.G.F. (7th), 1, XIX, Paris.

- Bakia, H. and Bega, Z.; 1989: Lushnje-Elbasan transversal fault and its role in the tectonic style and in the degree of overthrust in the External Albanides (Kruja, Ionian, Sazani). (In Albanian, abstract in English). Bull. Of Geological Sciences, No. 5.
- Bare, V., Mehilka, Ll., Skrame, J., Çobo, L.; 1996: The contribution of flattening for structural balancing in External Albanides. First Congress of the Balkan Geophysical Society, September 2-27, 1996, Athens, Greece.
- Beccaluva, L., Coltorti, M., Premti, I., Sacanni, E., Siena, F., Zeda, O., Bernoulli, D., Laubscher H.; 1994: Mid- ocean ridge and supra- subduction affinities in ophiolitic belts from Albania. *Ofioliti*, 19 (1), pp. 77- 96.
- Biçoku, T., Papa, A.; 1965: Reflection on tectonic zoning of the Albania. (In Albanian, abstract in English). *Permbledhje Studimesh*, No.1. pp. 7- 22.
- Biçoku, T.; 2000; Geological Mappings in Albania. 8th Albanian Congress of Geosciences Tirana 2000 "Position of Albanides in Alpine Mediterranean Folded System".
- Bushati, S., Dema, Sh., Duli, F. Xhomo, A. 1996. Geotectonic ophiolite position in Inner Albanides according to the gravity data. First Congress of the Balkan Geophysical Society, Athenes, Greece.
- Bushati, S.; 1998: Regional study of the distribution of gravity field of the Internal Albanides, for tectonics and metallogenic zoning. (In Albanian). Ph.D. thesis. Polytechnic University of Tirana.
- Bushati, S.; 1997: Geomagnetic Field of Albania, Magnetic Map. Monography, Center of Geophysical and Geochemical Investigation, Albanian Geological Survey, 1997.
- Cadet, J.P., Boneau, M., Charvet, J., Durr, S., Elter, P., Ferriere, P., Scandone P. and Thiebault, F.; 1980: Les chaines de la Mediterranée moyenne et orientale. 26 G.I., Coll. C-S Mem B.R.G.M., 115.
- Çermak V., Kresl M., Kučerova L., Safanda J., Frashëri A., Kapedani N., Liço R., Çano D.; 1996: Heat flow in Albania. *Geothermics*, Vol. 25, No. 1, pp. 91-102.
- Çollaku, A., Bonneau, M, Cadet, J.P., Jolivet, L.; 1992. L'éddifice structurale de l'Albanie septentrionale: des elements de reponse sur les modalités de la mise en place. *Bull. Soc. France*, 164 (2), pp. 150- 165.
- Chiappini, M., Bushati S., Duka B., Molone A., 1996: The Albanian Magnetic Network, Special publication of Istituto Nazionale di Geofisica e Volcanologia, Rome, Italy.
- Chiappini, M., Bushati S., Duka B., Molone A., 1991. The normal geomagnetic field and IGRF over Albania. *Bolletino di Geofisica teorica ed Applicata*, Vol.XXXIII, Nr.130-131,1991.
- Dalipi H.; 1985: The main phases of the geologic evaluation history of Outer Albanides. (In Albanian). *Oil and Gas Journal*, No. 2, pp. 33-54.
- Dalipi, H.; 1988: Sedimentation basin development in Outer Albanides during the carbonate formation deposition. (In Albanian). *Bull. Of Oil and Gas*, No. 1, pp. 3-19.
- Dhima, S., Misho, V., Hajnaj, P.; 1996: The seismic interpretation for exploration of new target in South Albania. First Congress of the Balkan Geophysical Society, September 2-27, s1996, Athens, Greece.
- Duka B., et Bushati S., 1997: The albanian Geomagnetic Repeat Station Network at 1994.75 Epoch. *J.Geomagnetic geoelectr.*, 49, 1997.
- Feinberg, H., Edel, B., Kondopoulou, D., Michard, A.; 1996: Implications of ophiolite paleomagnetism for interpretation of the geodynamics of Northern Greece. *Paleomagnetism*

and Tectonics of the Mediterranean Region, Geological Society Special Publication, No. 105, pp. 289-298.

Fezga, F., Mëhillka, Ll., Coci, R.; 1996. Structural model and evolution of the Ionian zone deduced from the geological and geophysical data. First Congress of the Balkan Geophysical Society, September 2-27, s1996, Athens, Greece.

Finetti, I. and Morelli, C.; 1972: Wide scale digital seismic exploration of the Mediterranean Sea. *Boll. Geof. Teor. Appl.*, 14, pp.291-342.

Frashëri, A.; 1993: Geothermics of the Albanides. *Studia Geophysiva et Geodetica.Acad. Sci. Czhech Republic, Prague*, 293-302 pp.

Frashëri, A., Nishani, P., Bushati, S., Hyseni, A.; 1995: Geophysical Study of the Albanides. *Bolletino di Geofisica Teorica ed Applicata*. Vol. XXXVII, N. 146, June 1995, pp.83-108.

Frashëri, A., Liço, R., Kapedani, N., Çanga, B., Jareci, E., Çermak, V., Kresl, M., Safanda, J., Kučerova, L., Stulc, P.; 1995: Geothermal Atlas of Albania. Faculty of Geology and Mining, Polytechnic University of Tirana, Geophysical Institute of Academy of Sciences of Czech Republic.

Frashëri, A., Bushati, S.; 1995: Paleomagnetic outlook on geodynamics of Albanides. (In Albanian). Report. Faculty of Geology and Mining, Polytechnic University of Tirana, Geophysical-Geochemical Center of Tirana.

Frashëri, A., Bushati, S., Vranaj, A., Kondopoulou, D., Pruner, P.; 1995: Report of results of magnetic properties of the ophiolites in Albania. (In Albanian). Faculty of Geology and Mining, Polytechnic University of Tirana.

Frashëri, A., Nishani, P., Bushati, S., Hyseni, A.; 1996: Relationship between tectonic zones of the Albanides, based on results of geophysical studies. *Peri Tethys Memoir 2: Structure and Prospects of Alpine Basins and Forelands*. *Mém. Mus. Natn. Hist.nat.*, 170, 485-511, Paris ISBN: 2-85653-507-0

Frashëri, A.; 1998: Outlook on tectonics of the Albanides, according to the temperature signals. *Microtemperature Signals of the Earth's Crust*. Die Deutsche Bibliothek-CIP-Einheitsaufnahme.

Frashëri, A., Liço, R., Kapedani, N.; 1999: An outlook on the influence of geological structures in geothermal regime in Albania. *Albanian Journal of Natural and Technical Sciences, Acad. Sci. of Albania*, No.1, 129-139 pp.

Frashëri, A.; 2000: Temperature signals from the depth of Albanides. (in Albanian, abstract in English). *Bull. of Geological Sciences 2000*, Geological Survey of Albania, pp. 57-66.

Grazhdani, A.; 1987: Metallogeny of the transversal faults in Albanides. (In Albanian, abstract in English).*Bull. of Geological Sciences*, No. 4, pp. 35-47.

Guri, S, Guri, M.; 1996: The seismic contribution on interpretation of External Albanides Structural Model. First Congress of the Balkan Geophysical Society, September 2-27, 1996, Athens, Greece.

Gjata, K., Kodra, A.; 1999: Albanian ophiolites: from rift to ocean formation. *EUG 10, Journal of Conference, Abstracts. Symp.F04, Petrologic.*, 405, Strasbourg.

Gjata, K. and Kodra, A.; Diversity of Mirdita ophiolitec. Alternative for their formation. 8th Albanian Congress of Geosciences Tirana 2000 "Position of Albanides in Alpine Mediterranean Folded System".

- Hoxha, L., Avxhiu, R.; 2000: Ophiolite volcanic's sulphide potential assement through integrated geological-geophysical and geochemical methods. 8th Albanian Congress of Geosciences Tirana 2000 "Position of Albanides in Alpine Mediterranean Folded System".
- Hoxha, L.; 2000. The Jurassic-Cretaceous orogenic event and its effects in the exploration of sulphide ores, Albanian ophiolites, Albania. *Eclogae geol. Helv.* 94 (2001).
- I.S.P.GJ., I.GJ.N., F.GJ.M. 1983: The Geology of Republic of Albania and the Geological Map at scale 1:200 000. Institute of Geological Studies, Polytechnic University of Tirana.
- I.S.P.GJ., I.GJ.N., F.GJ.M. 1985: The Tectonic Map of Republic of Albania at scale 1:200 000. Institute of Geological Studies, Polytechnic University of Tirana.
- Kane, I., Tsokas, G.N., Kondopoulou, D. and Bushati, S.; 1999: The structure of the ophiolitic belt in Albania interfered from geomagnetic anomalies. Second Congress of the Balkan Geophysical Society, July 5-9, 1999, Istanbul, Turkey.
- Kissel, C., Speranza, F., Islami, I., Laj, C., Hyseni, A.; 1992: First paleomagnetic evidence for rotation of the Ionian Zone of Albania. *Geophysic Res. Lett.* 19(7), pp. 697-700.
- Kissel, C., Speranza, F., Islami, I., Laj, C., Hyseni, A.; 1994: Cenozoic rotational evolution of the Albani-Greek margin. General Assembly of European Geophysical Society, Section II: Geophysics of the Solid Earth, Paleomagnetism and Rocks Magnetism. Grenoble, May 1994, France.
- Kissel, C., Speranza, F., Islami, I.; 1994: Paleomagnetic reconstruction of the Cenozoic Geodynamical Evolution of the Central and Eastern Mediterranean. *Mediterranean Symposia.* London, September 1994.
- Kissel, C., Speranza, F., Islami, I., Hyseni, A.; 1995: Paleomagnetic evidence for Cenozoic clockwise rotation of External Albanides. *Earth and Planetary Science Letters*, vol. 129, pp. 121-134.
- Kodra, A.; 1987: Scheme of the paleogeographical and tectonic development of Inner Albanides during the Triassic and Jurassic. (In Albanian, abstract in English). *Bull. of Geological Sciences*, No. 4, pp. 3-14.
- Kodra, A.: 1998: Rifting of the Mirditas's continental crust and the first stages of the oceanic opening during the Triassic and Jurassic. (In Albanian, abstract in English). *Bull. of Geological Sciences*, No. 4, pp. 3- 14.
- Kodra, A., Gjata, K., Bakalli, F., Xhomo, A.; 1996: Introduction to the geology of Albania with special reference to the ophiolites. *Conv. Italo- Albanese.* Tirana, pp. 12- 18.
- Kodra, A., Gjata, K., Xhomo, A.;2000: Tectonic history of the Mirdita oceanic basin (Albania). (In English). *Bull. of Geological Sciences 2000*, Geological Survey of Albania, pp. 5-26.
- Koçiu, S., 1989. On the construction of the Earth Crust in Albania according to the first onset of P waves in the seismologic stations. (In Albanian, abstract in English). *Bull. of the Geological Sciences*, No. 1, pp. 137-159,
- Langora, Ll., Bushati, S., Likaj, N.; 1983: Some objections on setting of the ophiolites in Albania. (In Albanian, abstract in English). *Bull. of the Geological Sciences*, No. 3, pp. 51-63.
- Lubonja, L., Frasherri, A., Spiro, A.; 1968: Application of the regional gravity and magnetic surveys in Albania. (In Albanian, abstract in English). *Permbledhje Studimesh*, No. 7, pp. 49-63,
- Lulo, A. and Bushati, S.; 2000: 3D inversion of the Albanian Magnetic Anomaly Map after terrain correction. 8th Albanian Congress of Geosciences Tirana 2000 "Position of Albanides in Alpine Mediterranean Folded System".

- Meço, S. and Aliaj, Sh.; 2000: Geology of Albania. Gebruder Borntrager Berlin. Stuttgart.
- Melo, V.: 1986: The structural geology and geotectonic (The geology of the Albanides). (In Albanian). The Publishing House of University of Tirana.
- Mauritsch, H. J., Alikaj, P., Melo, V.; 1991: Paleomagnetic studies in Albania. I-st National Symposium of the Geophysics. Tirane.
- Mauritsch, H. J., Scholger, R., Bushati, S., Xhomo, A.; 1994: Report of Paleomagnetic surveys in Albanian Geophysical-Geochemical Center of Tirana, Albania.
- Mauritsch, H. J., Scholger, R., Bushati, S., Kalldani G., Langore Ll., Hysi R.; 1993: Paleomagnetic studies in the South of Albania and their importance in the evaluation of evolution of Dinarides and Hellenides geodynamical movement. Geophysical-Geochemical Center of Tirana, Albania, 1993.
- Mauritsch, H. J., Scholger, R., Bushati, S.; 1994: Paleomagnetic results from Albania and their tectonic significance for the Pindos-Gavrovo and Ionian Zone. 7 Congress of the Geophysical Society of Greece Thessaloniki, 25-27 May 1994.
- Mauritsch, H.J.; 2000: The dynamic evolution of the Balkan Peninsular- a paleomagnetic analysis. 8th Albanian Congress of Geosciences Tirana 2000 "Position of Albanides in Alpine Mediterranean Folded System".
- Mëhillka, L., Canaj, B., Banaj, M.; 1996: The role of transversal tectonic faults in tectonic style, structural model and geodynamical evolution of the Ionian zone. First Congress of the Balkan Geophysical Society, September 2-27, 1996, Athens, Greece.
- Mëhillka, L., Dore, P., Gjika, A.; 1999: New structural styles and independent petroleum systems in Outer Albanides. Second Congress of the Balkan Geophysical Society, July 5-9, 1999, Istanbul, Turkey.
- Morelli, C., Carrozzo, M.T., Cecherini, P., Finetti, I., Gantar, C. and Schmid di Freindberg; 1969: Regional Geophysical study of Adriatic sea. Boll. Geof. Teor. Appl., 11, pp. 3-55.
- Muttoni, G., Kent, D.V., Meço, S., Nocora, A., Gaetani, M., Balini, M., Germani, D., Rettori, R.; 1996: Magneto-biostratigraphy of the Spathian to Anisian (Lower to Middle Triassic) Kçira Section, Albania.
- Nishani, P.; 1985: The analyse of the results of geophysical prospecting for the best knowledge of the geology of the central part of the tectonic zone Kruja and their neighbor zone. (In Albanian). M. Sc. thesis. Polytechnic University of Tirana.
- Papa, A. and Kondo, A.; 1968: Reflection about the Sazani zone and its transition into Ionian zone. (In Albanian, abstract in French). Bull. of Tirana University. Natural Sciences serie, No. 2, pp. 47- 55.
- Papa, A.; 1970: Conceptions nouvelles sur la structure des Albanides. Bull. Soc. Géol. France, Paris, 7eme Ser, Vol. XII, No.6, pp. 1096- 1109.
- Papa, A.; 1993: Les Albanides dans la Chaîne Alpine. Structure et evolution geodynamique. Conference au Depart. Sciences de la terre et de l'Univers. Universite de Sciences et Technique du Languedoc. Montpellier II.
- Papa, A.; 2000: The adventure of a notion: Albanides. Bull. Of Geological Sciences 2000. (in Albanian, abstract in English). Geological Survey of Albania, pp. 99-104.

Qirinxhi, A.S.; 1970: On problems of the space location of ultrabasic rocks of Dinarido- Taurid folded Alpine Belt in Albanides example. (In Albanian, abstract in English). *Permbledhje Studimesh*, No. 2, pp. 79- 98.

Richetti, G.; 1980: Flessione e campo gravimetrico della micropietra Apula. *Boll. Soc. Geol. It.*, 99, pp. 431-436.

Robertson, A., Shallo, M.; 2000: Mesozoic-Tertiary tectonic evolution of Albania in its regional Eastern Mediterranean context. *Tectonophysics*, 316 (2000), pp. 197-254.

Seitaj, H., Mëhillka, L., Xhelili, A., Kamberi, Th.; 1996: Complex interpretation of seismic and geological data of western orogenic front of Ionian zone and prospect of this area. First Congress of the Balkan Geophysical Society, September 2-27, 1996, Athens, Greece.

Speranza, F.; 1995: Evolution of Cenozoic geodynamic of Alpine Belt at Mediterranean Centrale: Paleomagnetism contribution. Ph.D. These. University Pierre and Marie Curie, Paris VI, France

Sulstarova, E.; 1987: Focal mechanism of the Earthquakes in Albania, and neotectonic stress field. (In Albanian, abstract in English). *Bull. of Geological Sciences*, No. 4, pp. 133-170.

Shallo, M., Kote, Dh., Vranaj, A. and Prendi, I.; 1989: Some petrologic features of the ophiolite of Albanides. (In Albanian, abstract in English). *Bull. of geological Sciences*, No. 2, pp. 9- 27.

Valbona, U. and Misha, V.; 1987: Some problems on the determination of the margin between their belts and chains based on surface surveys and other data of the complex. (In Albanian, abstract in English). *Bull. of Oil and Gas*, No. 1, pp. 3-14.

Veizaj, V.; 1995: Study of gravity results according the relationship of Albanides orogen with Apulian platform. M. Sc. these. Polytechnic University of Tirana.

Veizaj, V., Frasherri, A.; 1996: Relations between Albanide's Orogen and Apulian Plateforme according to the gravity data. First Congress of the Balkan Geophysical Society, September 2-27, 1996, Athens, Greece.

Velaj, T.; 1999: The effect of the evaporite tectonic in the structural model of the Berati belt of Albanides. Second Congress of the Balkan Geophysical Society, July 5-9, 1999, Istanbul, Turkey.

Xhufi, C., Canaj, B.; 1999: Some aspects of seismic-geologic interpretation in thrusting belts, Albania. Second Congress of the Balkan Geophysical Society, July 5-9, 1999, Istanbul, Turkey.

LIST OF CAPTIONS

- Fig. 1. Schematic Map of African Plate Subduction under the Euroasiatic one (After Ricou, El. 1986)
1- Euro-Asiatic Continent; 2- African continent; 3- Kishir block; 4- Presents Oceanic Basins; 5- Boundaries of Mesozoic Oceans; 6- Boundaries of Mesozoic Ocean and the Main Ophiolitic Nappes; 7- Troughs of present and past subduction.
- Fig. 2. Schematic Tectonic Map of Albania.
- Fig. 3. Geologic structure of Earth's Crust and Upper mantle based on seismological studies (data taken from Koçiu S. 1989).
The numbers given in the column show the velocity of the seismic waves, in km/s).
1- Sedimentary Crust; 2- Consolidated crust; 3- Granitic Crust; 4- Basalt Crust; 5- Upper mantle; 6- Asthenosphere; 7- BK Crystal Basement; 8- Moho Discontinuity.
- Fig. 4. Bouguer Gravity Map of Albania (After V. Veizaj 1994).
- Fig. 5. The Complex Tectonic Map and map of the trend of 3rd degree of Bouguer Anomaly in the Albanides.
1. Peri-Adriatic Depression; 2- Ionian Zone; 3- Kruja zonw; 4- Krasta-Cukali zone; 5- Sazani zone; 6- Mirdita zone; 7- Korabi zone; 8- Gashi zone; 9- Albanian Alps zone; 10- Vermoshi zone; 11- trend of 3rd degree of Bouguer Anomaly; 12- Boundary between shelf and continental slope; 13- The axes of the up-left and down-left of the Mante; 14- Boundary of the Peri-Adriatic Depression with angular discordance; 15- Normal fault; 16- Pressure; 17- Limit of deformed envelopment during the neotectonic period; 18- Overthrust; 19- Flexure; 20- Flexure and faults based on geophysical data; 21- Inactive overthrust; 22- Compression (a) and (b) extension zones; 23- Deep faults.
- Fig. 6. The Complex Tectonic Map and axes of the Bouguer anomaly in the Albaniedes and in continental plate of the Adriatic Sea.
1. Peri-Adriatic Depression; 2- Ionian Zone; 3- Kruja zonw; 4- Krasta-Cukali zone; 5- Sazani zone; 6- Mirdita zone; 7- Korabi zone; 8- Gashi zone; 9- Albanian Alps zone; 10- Vermoshi zone; 11- The axes of the Bouguer Residual Anomalies, positive (a) and negative (b); 12- Iso-anomals of the Bouguer Anomaly in the Adriatic and Ionian Sea (after Morelli C et al. 1969); 13- The axes of the up-left and down-left of the Mante; 14- Boundary of the Peri-Adriatic Depression with angular discordance; 15- Normal fault; 16- Pressure; 17- Limit of deformed envelopment during the neotectonic period; 18- Overthrust; 19- Flexure; 20- Flexure and faults based on geophysical data; 21- Inactive overthrust; 22- Compression (a) and (b) extension zones; 23- Seismogene deep up-rupt; 24- Isobaths of the water depth, in meters.
- Fig. 7. The Total Magnetic Field Map of Albania (After Bushati S. 1987).
- Fig. 8. Geological-geophysical profile Albanid-2: Falco Adriatic Sea- Durres-Tirana- Peshkopi (The gravity data for the Adriatic Sea after Richetti, 1980).
1. Pliocene Substratum; 2- Substratum of Serravalian Molasses-Paleogenic flysch (Pg₃) over the limestone; 3- Lower - Middle Paleogene (Pg_{1,2}) - Triassic carbonatic facies; 4- Ultrabasic rocks; 5- Permian evaporites; 6- Crystal basement; 7. The basalt Earth Crust 8. Mantle; 9- Moho Discontinuity; 10. Depth up-rupt; 11- Density value of the rocks, in g/cm³; 12- Temperature, in °C; 13. Deep wells; 14. Δg_B - Bouguer Gravity Anomaly; 15. Total Magnetic Field Anomaly; 16. Q- Heat Flow Density.
- Fig. 9. Heat Flow Density Map of Albania.
- Fig. 10. Geological-geophysical Shkodër-Kukës profile.
1- Effusive rocks; 2- Ultrabasic rocks; 3- Gabbro; 4- Sedimentary formation; 5- Disjunctive tectonic.
- Fig. 11. Geological- geophysical profile: Adriatic Sea- Vrith
- Fig. 12. Geological-geophysical profile: Shëngjin- Vrith.
- Fig. 13. Geological-geophysical profile: Tirana- Bulqizë- Shupenzë.
1- Terrigenous Tortonian Deposits; 2- Paleogene flysch deposits; 3-

- Upper Cretaceous-Paleogene Limestone; 4- Tironian- lower Cretaceous flysch deposits; 5- Upper Triassic- lower Triassic limestone; 6- Radiolaritic limestone with silic radiolarities; 7- Ultrabasic rocks; 8- Effusive rocks; 9- Limestone with siliceous of middle Triassic- lower Jurassic; 10- Overthrust plate; 11- Up-rup tectonic; 12- Electrical sounding centers; 13- Unconformity surface; 14- Bouguer anomaly; 15- Magnetic anomaly; 16- Electrical sounding resistivity curve.
- Fig. 14. Geological-geophysical profile through Paleogene and Cretaceous flysch exposures of Okshun window.
Abbreviations: T- Triassic; J- Jurassic, Cr- Cretaceous, Pg- Paleogene.
- Fig. 15. Geoelectrical profile: Klos-Prosek over the Burreli Neogenic Fosse.
1- Quaternary gravel and conglomerate; 2- Detritic-argillaceous pack; 3- Sandstone-conglomerate; 4- Volcanic rocks; 5- Volcanogenic sedimentary pack; 6- Limestone; 7- Synthetic vertical electrical sounding curve; 8- Observed vertical electrical sounding curve.
- Fig. 16. Reflection seismic line in the Burreli Neogenic Fosse.
- Fig. 17. Inversion of seismic P waves velocity from seismologic data (After Koçiu S., 1989).
- Fig. 18. Geological-geophysical profile: Alps-Cukali-Mirdita zones, over the Shkodër- Pejë Transversal.
- Fig. 19. Reflection seismic line in the Tiran Neogenic Depression.
- Fig. 20-a. Regional reflection seismic line in Ionian and Peri-Adriatic Depression.
- Fig. 20-b. Reflection seismic line in Ionian and Peri-Adriatic Depression.
- Fig. 20-c. Reflection seismic line in Ionian and Peri-Adriatic Depression.
- Fig. 21. Geological-geophysical profile Albanid-1: Falco Adriatic Sea- Seman-Kuçovë- Bilisht (The gravity data for the Adriatic Sea after Richetti, 1980). Legend as in the fig. 8.
- Fig. 22- Geological profile of Sazani-Zvërnec in Vlora district.
- Fig. 23. Geological-geophysical profile: Saranda-Gjirokastra region.
Q- Quaternary; 2- N_1^{1a} - Aquitanian flyschoid formation; Pg_3 - Upper Oligocene flysch; Pg_{1-2} - Lower-Middle Oligocene limestone; Cr_2 - Upper Cretaceous limestone; Cr_1 - Lower Cretaceous limestone; J_1 - Lower Jurassic limestone; J_2 - Middle Jurassic limestone; J_3 - Upper Jurassic limestone; T_3 - Dolomites of the Upper Triassic; T_3 - Upper Triassic with evaporites; Trend of the Bouguer Anomaly; Δg_B - Bouguer anomaly; 1, 2, ..., 9- Depth wells.
- Fig. 24-a. Reflection seismic line: Divjaka brachianticline in Peri-Adriatic Depression.
- Fig. 24-b. Reflection seismic line: Divjaka brachianticline in Peri-Adriatic Depression.
- Fig. 25. Paleomagnetic Declinations Map of the External Albanides (Kisel C. et al. 1994).
- Fig. 26. Regional Paleomagnetic Declinations around Adriatic Sea and expected paleomagnetic declination for Africa during the Eocene-middle Pliocene period (After Speranza F. 1995).
- Fig. 27. Schematic evolution of the orientation of Albanides-Hellenides and Dinaride structures during the Cenozoic era (After Speranza F. 1995).