

Outlook on some result of marine geology and geophysics studies in the Albanian Adriatic Shelf

Alfred FRASHERI

**Faculty of Geology and Mining, Polytechnic University of Tirana,
Albania.**

E-mail: alfi@inima.al; Phone: +355 4 225160

Tirana, February 2007

Marine geophysics & geology: Selected studies & publications

- Veizaj V., Frasheri A., 1995. Relation between Albanides orogen with the Apulian Platform according gravity. Symposium ALBPETROL-95, November 1995, Fieri.
- Frasheri A., Nishani P., Hyseni A., Bushati S., 1993. The relation between tectonic zones of Albanides on the basis of the results of geophysical studies. Workshop Albania-Italia: Transetto crostale dalla Piataforma Apulia alle Albanidi. Universita di Bari, 18-19 Maggio 1993.

- Frasher A., Lubonja L., Nishani P., Bushati S., Hyseni A., Leci V., 1991. Les données géophysique sur les relations entre les zones tectonique des Albanides à terre et sur le plateau continental de la Mer Adriatique. Colloque sur la Géologie de Albanie. Séance spécialisée de la Société Géologique de France. Paris 12-13 Avril 1991.
- Papa A. 1991 "Geological setting of the Albanian Adriatic Shelf". National Symposium "Coastal area of Albania", Academy of Science of Republic of Albania, Tirana.

- Frasherri A., Lubonja L., Nishani P., Bushati S., Hyseni A., Leci V. 1989. On the relation among the Inner Albanides, Outer Albanides and offshore shelf of Adriatic based on geophysical complex studies. Bulletin of Oil and Gas (Fier) No. 2, 9 - 28, (in Alb., summ.y in English)
- Frasherri A., 1987. Investigation of electrical field scattering through heterogeneous geological media. Effectiveness of marine geoelectrical surveys for investigation of the Durrresi-Palle Cape anticline. (In Albanian), Ph.D. Thesis, Faculty of Geology and Mining, Polytechnic University of Tirana.

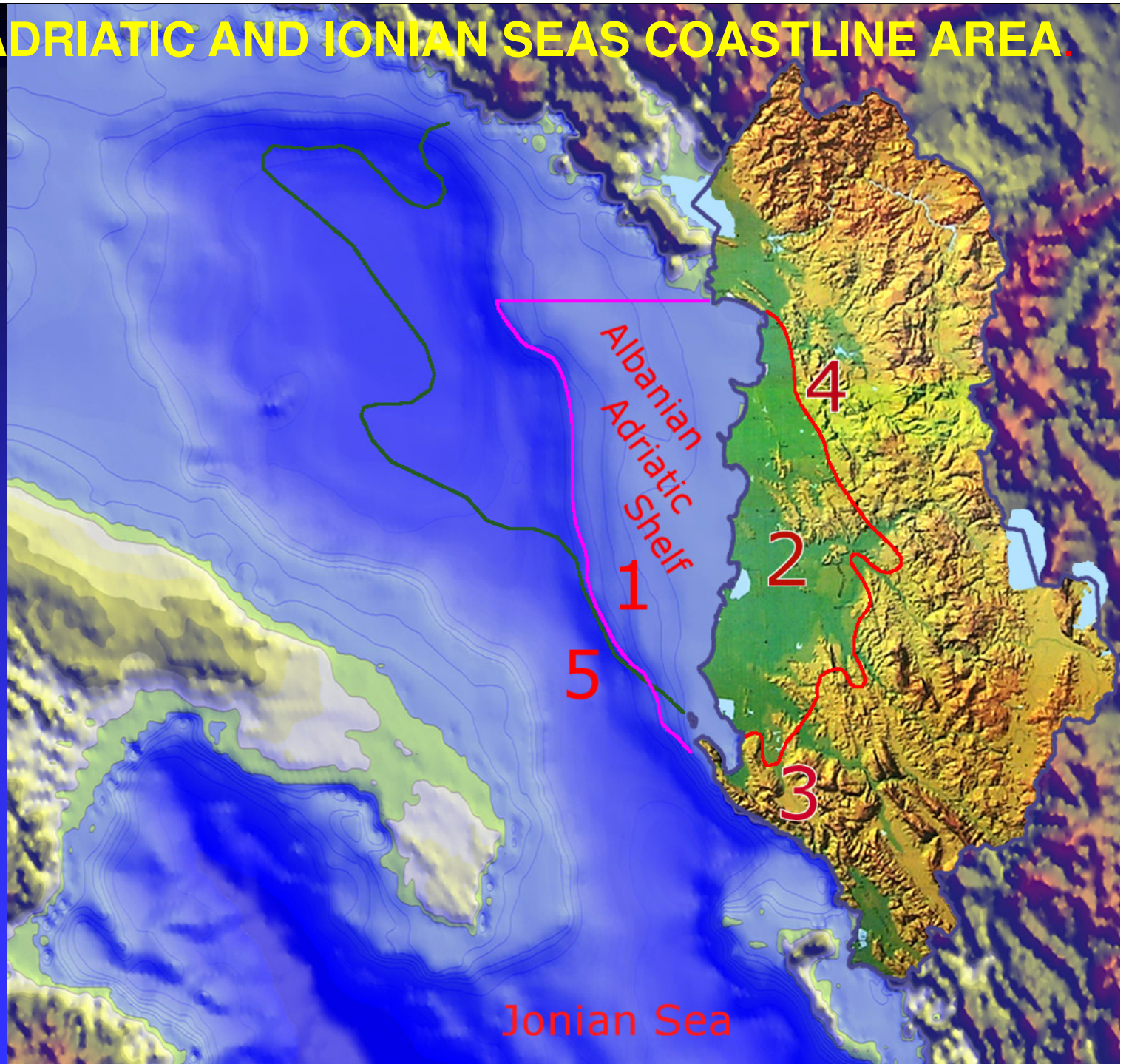
•Leci V., 1987. Effectiveness of marine geoelectrical and seismic surveys for oil and gas-bearing structures exploration in Albanian Adriatic Shelf. (In Albanian), M.Sc. Thesis, Faculty of Geology and Mining, Polytechnic University of Tirana.

•*Leci V., Hyseni A., Kokobobo A., Penglili L., Frasheri A., Topçiu H., Haderi E., Ciruna K., Koka R., Jani L., 1986. The geology and tectonic construction of the Albanian Adriatic Shelf, from Vlora to Shengjini Bay (including Sazani Island), according to the marine integrated geological-geophysical studies. (In Albanian), Durrresi, Archive of Oil and Gas Institute, Fieri.*

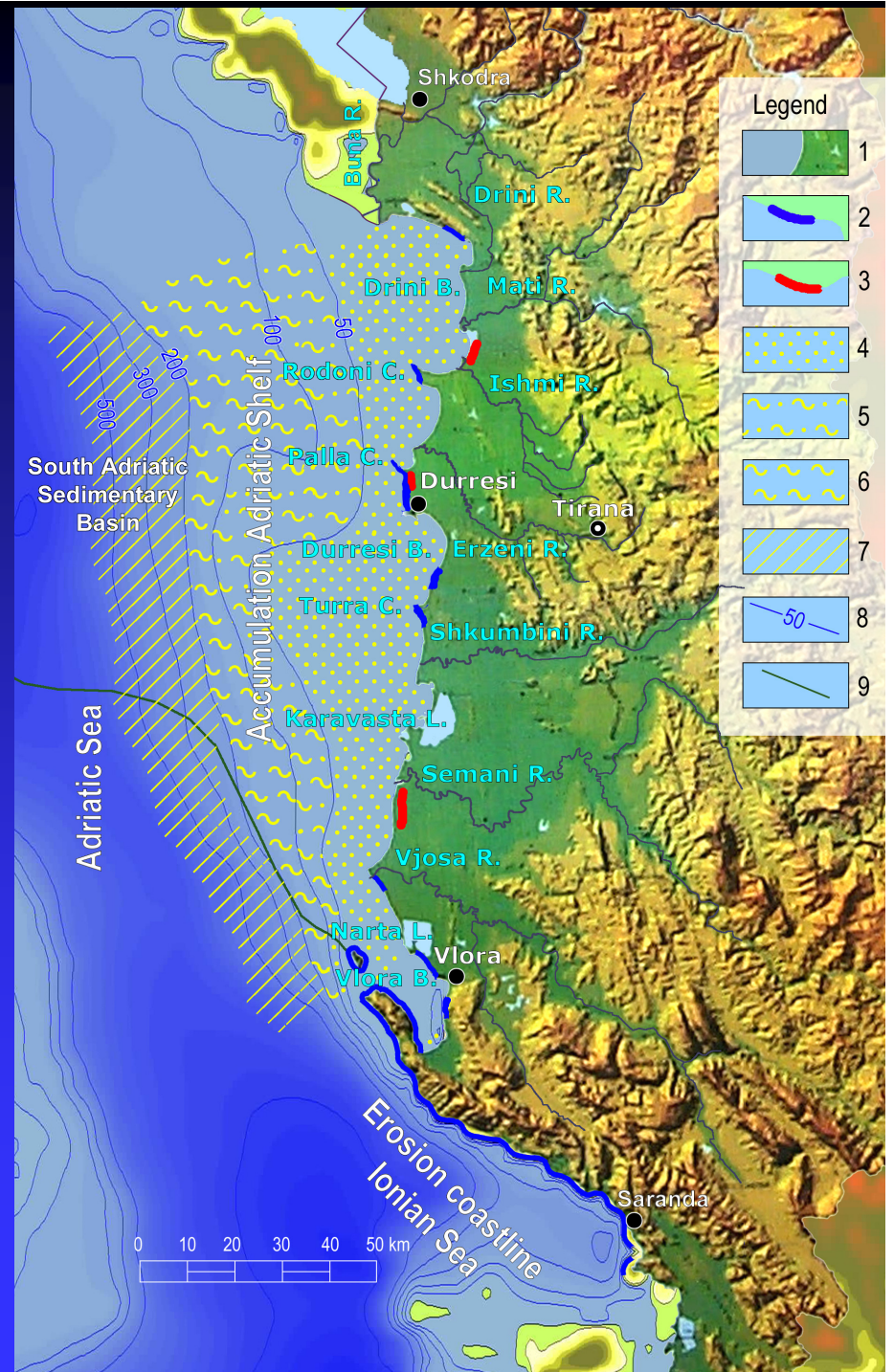
- Papa A., 1985. Geology and geomorphology of Albanian Sedimentary Basin and Adriatic Shelf. (In Albanian, resume in French), Geographical Studies, Academy of Sciences, No. 1, pp. 96-116.
- Papa A., Pengili L., 1981, Geology of Adriatic Shelf at Durresi District. (In Albanian), Oil and Gas Institute Symposium, Fieri.
- Thereska J., 1981. Study of natural radioactivity in some Albanian Adriatic shoal shelf. (In Albanian), M.Sc. Thesis, Institute of Nuclear Physics, Academy of Science, Tirana.

- Lubonja L., Frasheri A., 1961. "Outlook on application of geophysical method for search of Adriatic Sea coastal beach Placers". Symposium, (In Albanian). Faculty of Engineering, University of Tirana.

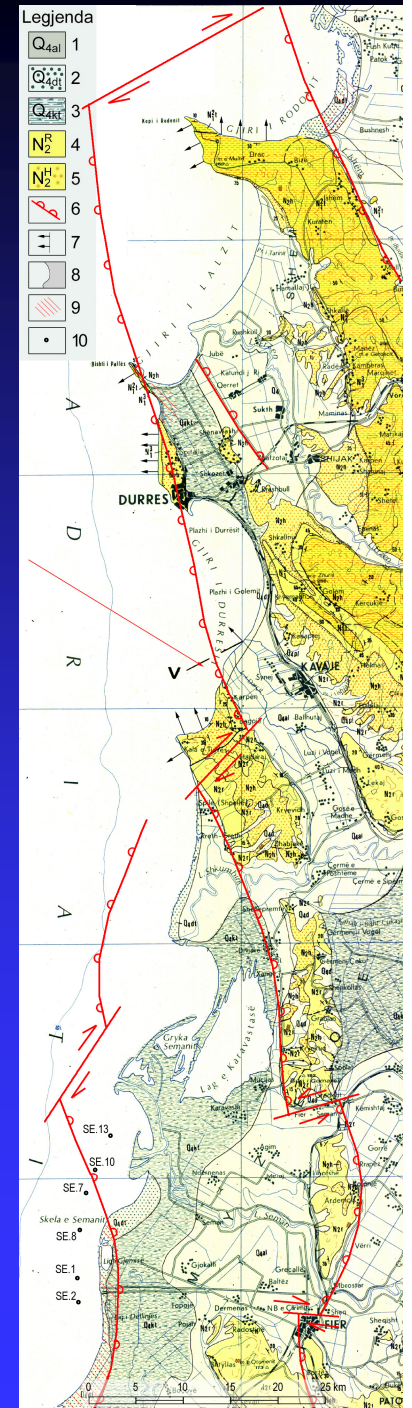
ALBANIAN ADRIATIC AND IONIAN SEAS COASTLINE AREA.



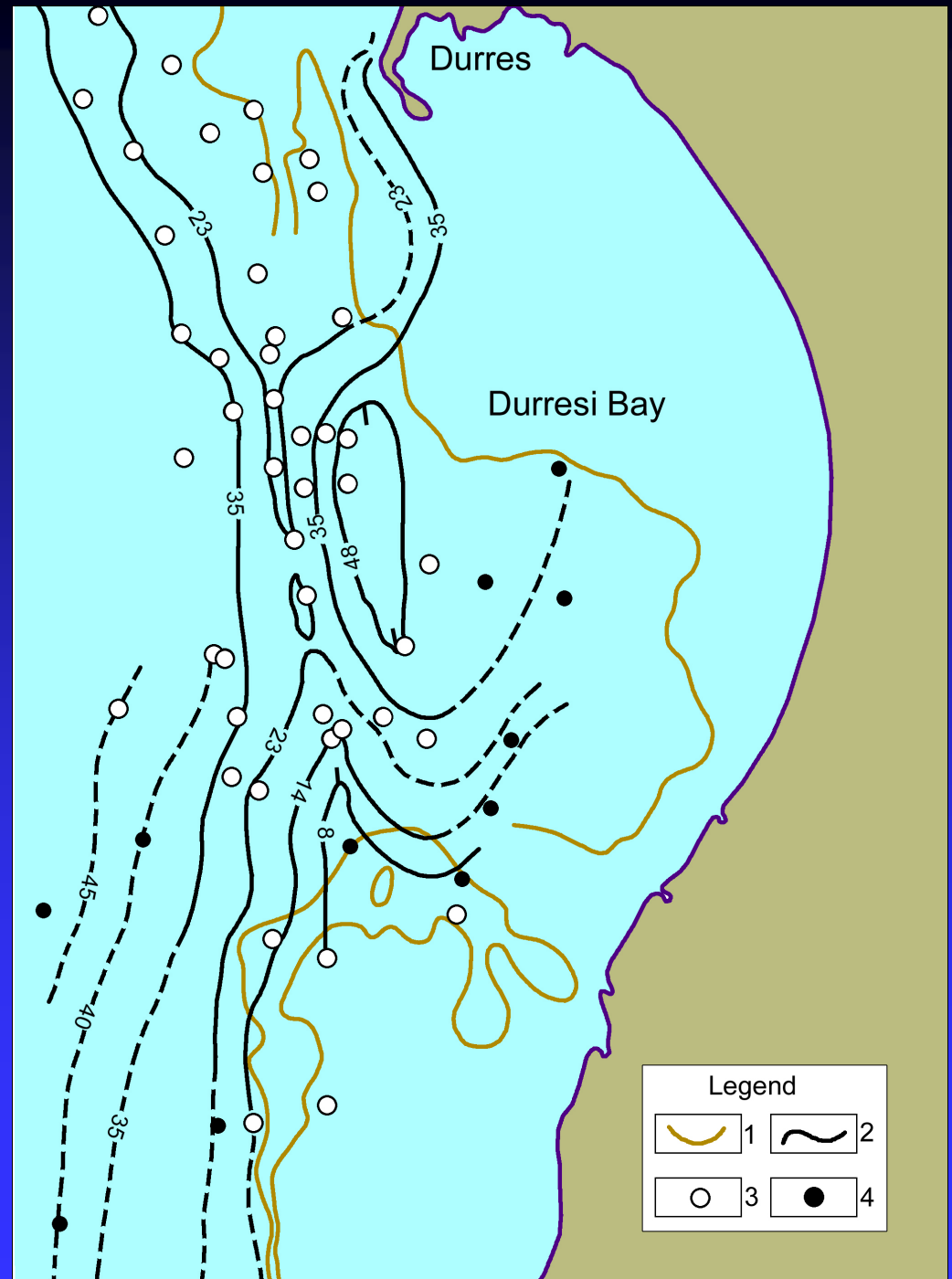
Geomorphological Scheme of Albanian Adriatic and Ionian Seas coastline.



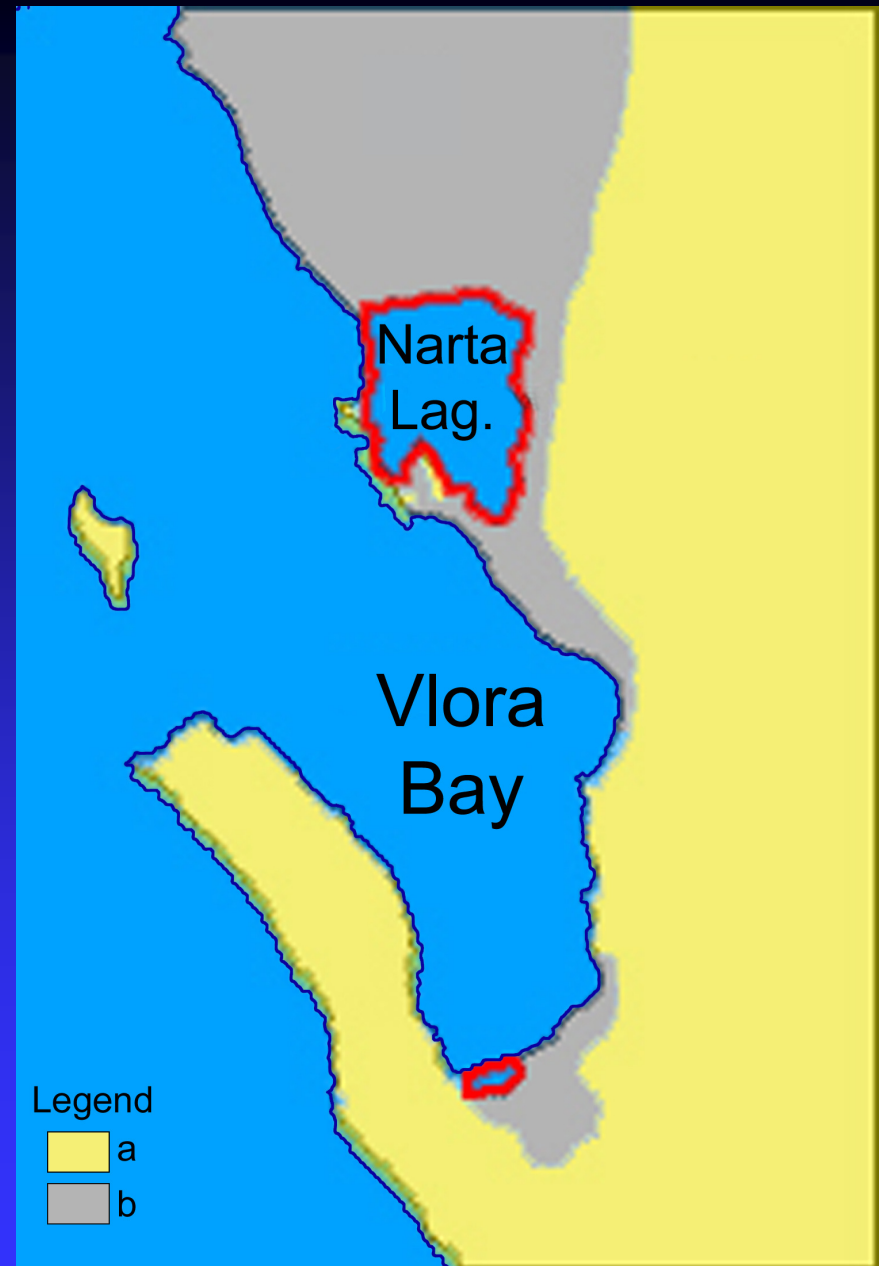
General Geomorphological Evolution view of the Vjosa River Mouth- Mati River



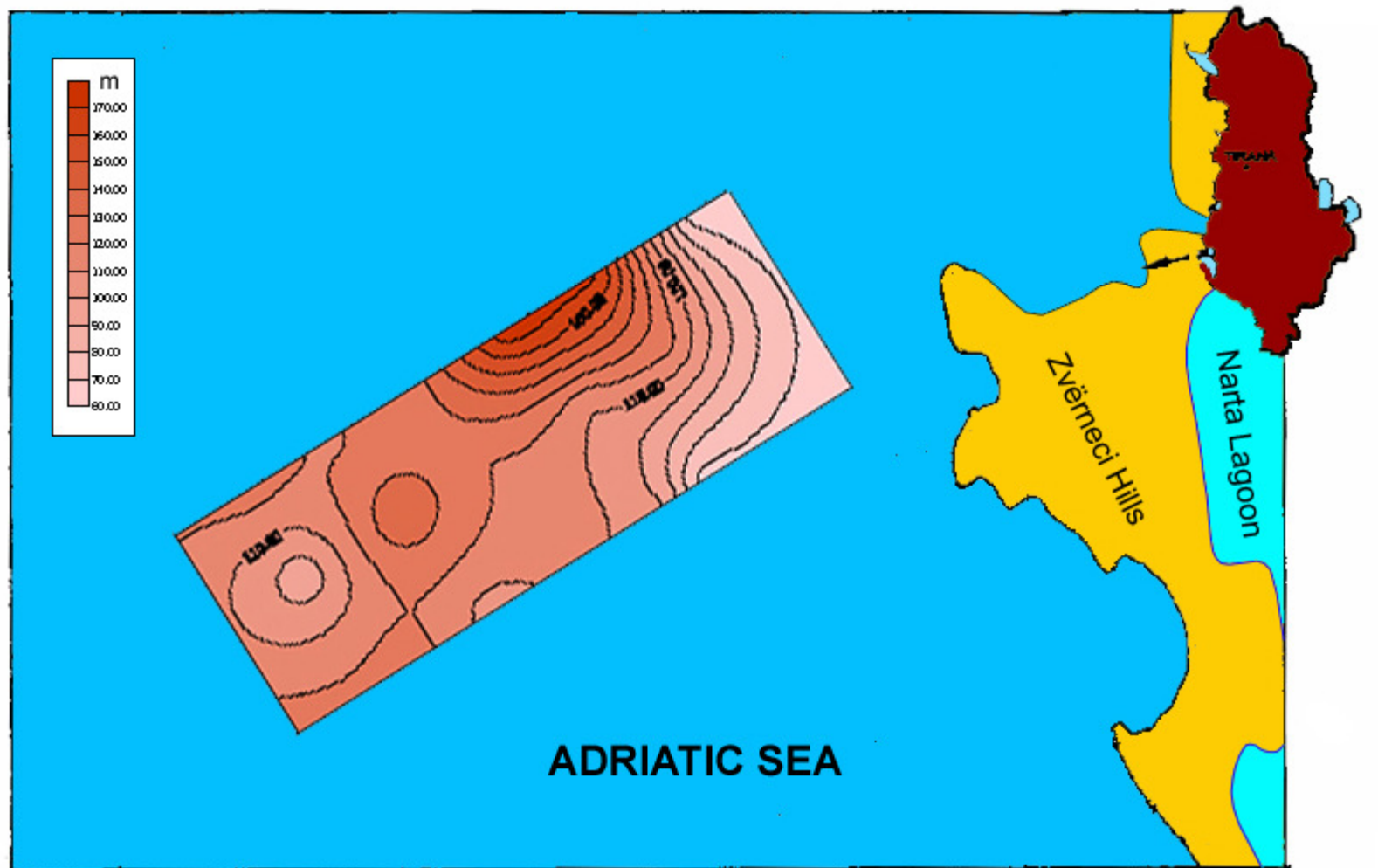
- Thickness Map of Quaternary Deposits in Durrësi Bay, according to the marine electrical soundings.



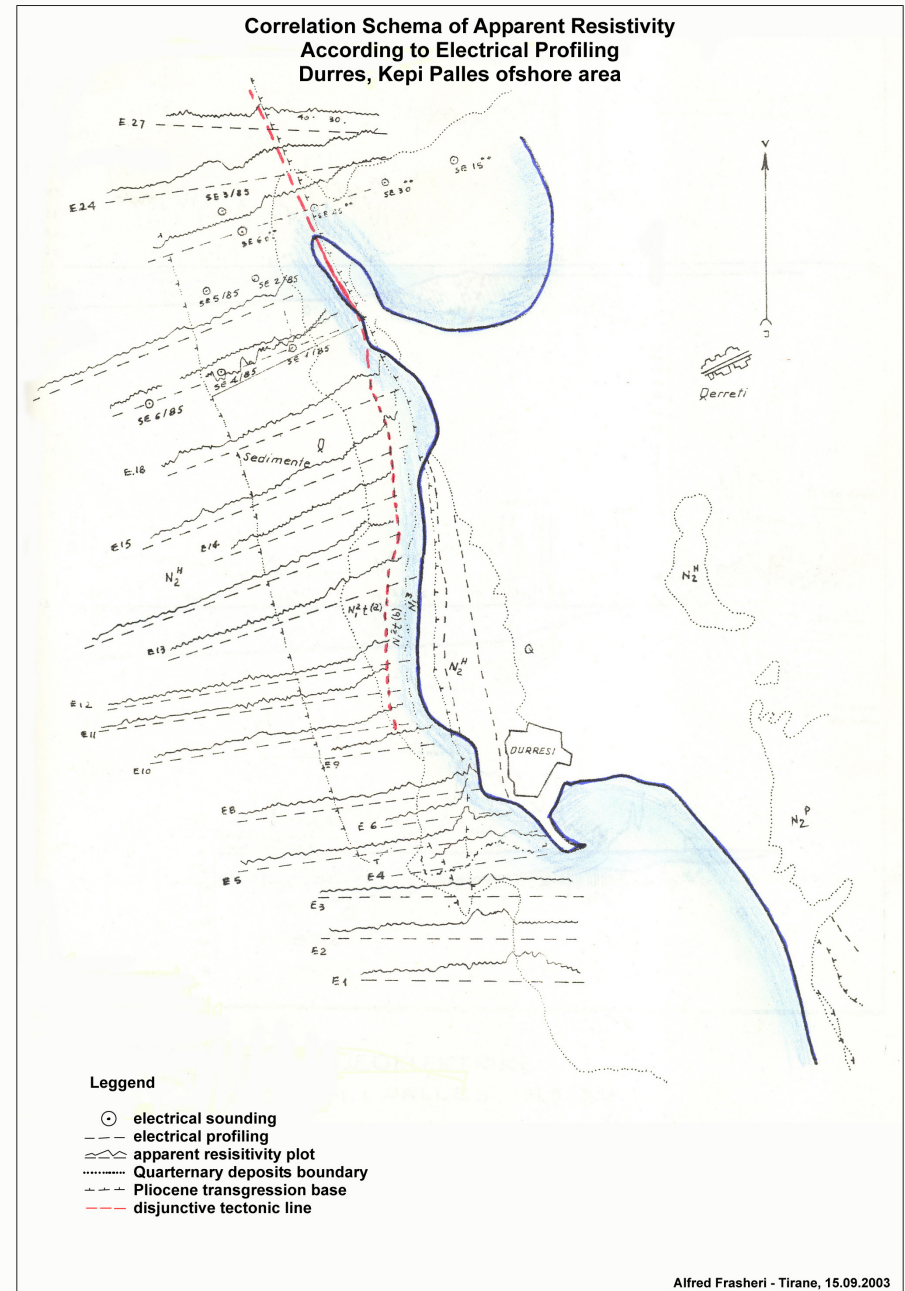
- Paleogeographic evolution of the Vlora Bay from end of Pliocene Age (a) up to Present days (b).



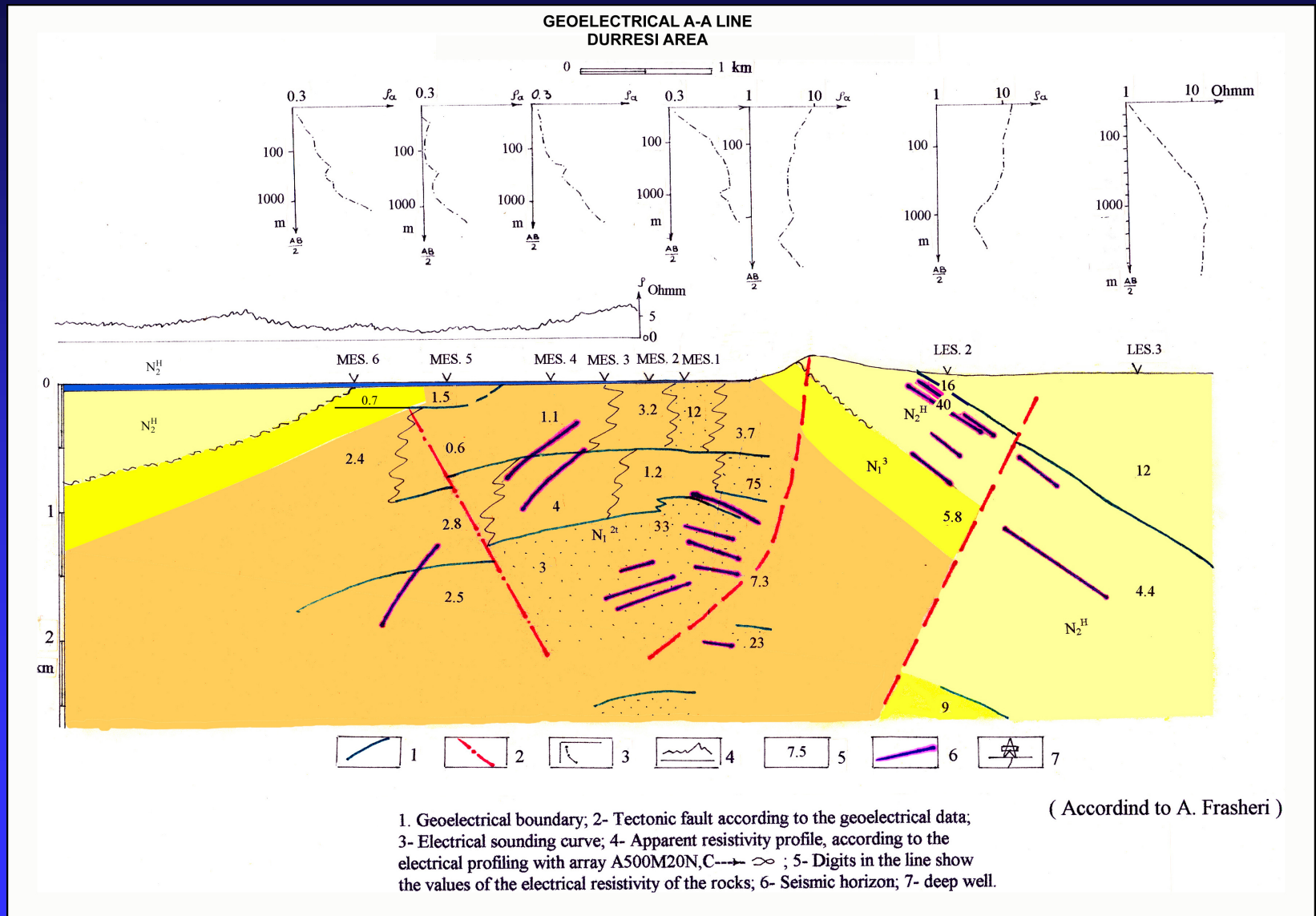
Thickness Map of Quaternary Deposits in Vlorë Bay, at Zvërneci area, according to the marine electrical soundings.



- Correlative Schema of Apparent Resistivity according to Electrical Profiling, offshore erosive littoral at Durrësi-Kepi Pallës area.



Geoelectrical Line, erosive littoral at Durrës-Kepi Pallës area.



Marine Electrical Resistivity Tomography Line, Semani Adriatic Shelf.

