

20 (k-1-20) Kompjuterë HP-Compaq, të përdorur, pa sistem (bosh) nga ProCredit Bank (2008?!)

Përdorues të konfiguruar:

1. test|pass:dbi|pass hint: fti (administratori)
2. student (përdoruesi)

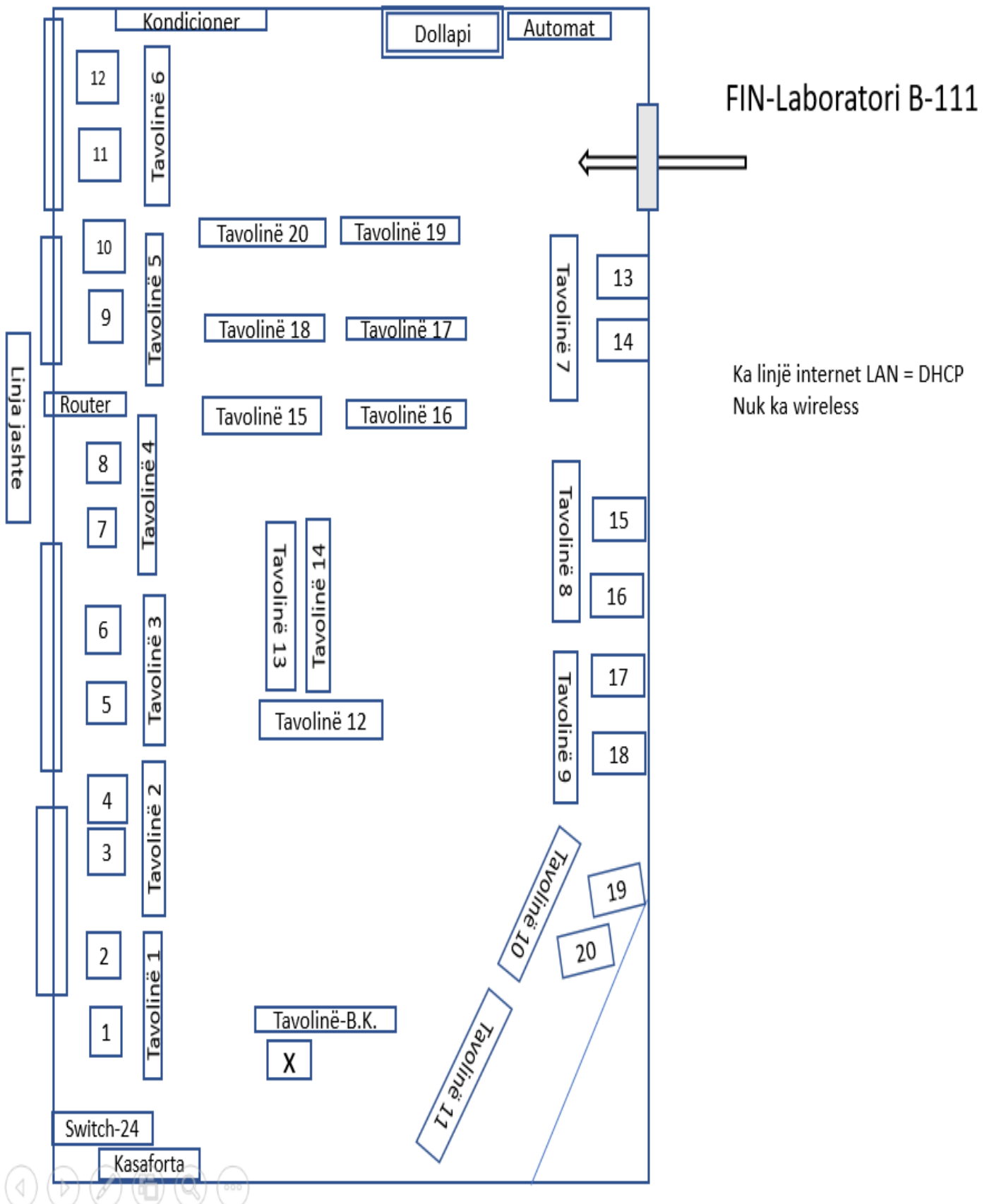


1. Kondicioneri | **Ngrohja qendrore**
2. Tavolinat nga ProCredit: 20
3. Komodina nga ProCredit: 19+1 (fotokopja)
4. Kompjuterë nga ProCredit: 20 (**Duhen RAM !!**)
5. 2 Tabela të bardha (lapustil)
6. 45 karrige
7. 6 shirita perde
9. 3 njësi kompjuteri jo funksionale

Fakulteti i Inxhinierisë së Ndërtimit (FIN) - LABORATORI B-111

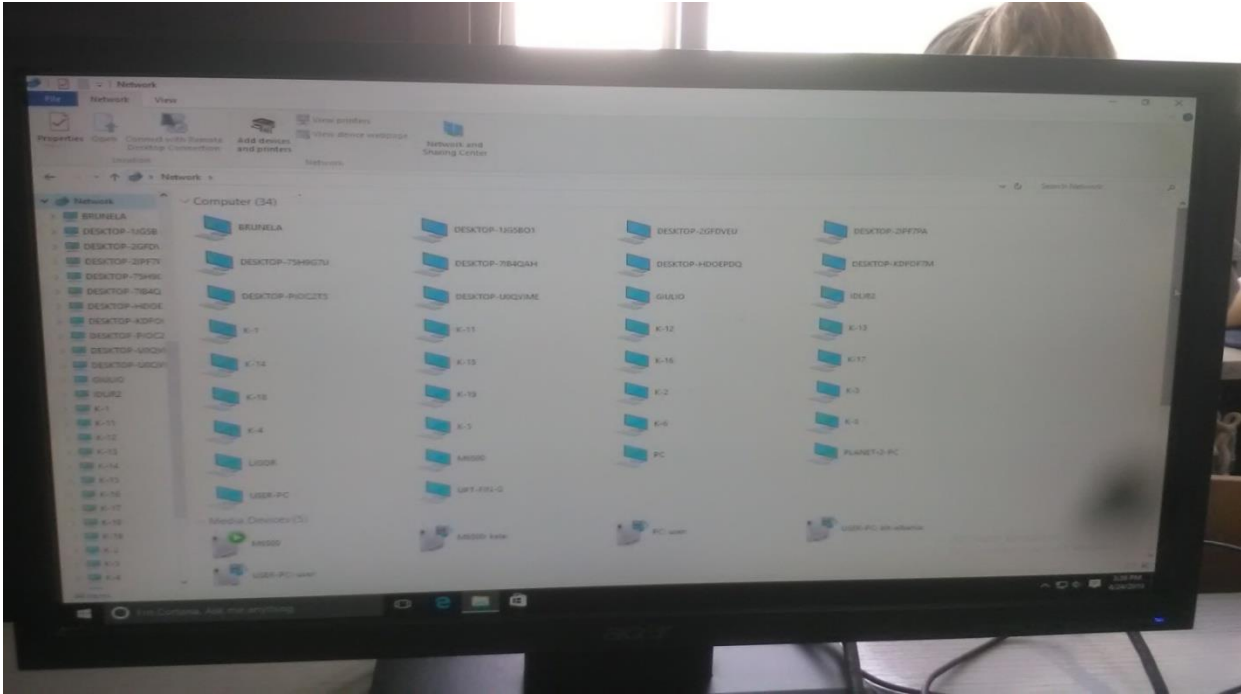
Emri i kompjuterit	CPU (GHz)	DDR2-SDRAM (GB)	HDD (GB)	Soft	KOMENTE
k-1	Intel® Celeron® CPU 440 @ 2 GHz	1	150=130+20	Win 10 64-bit,cpu-z, speccy, Raptor, c-free5, devcpp, office 2007, Matlab2015-64bit-version portabël	
k-2	Intel® Celeron® CPU 440 @ 2 GHz	1	150=100+50	Win 10 64-bit,cpu-z, speccy, Raptor, c-free5, devcpp, office 2007, Matlab2015-64bit-version portabël	
k-3	Pentium® Dual-Core E5300 CPU 2.6 GHz,	2	300=150+100+50	Win 10 64-bit,cpu-z, speccy, Raptor, c-free5, devcpp, office 2007, Matlab2015-64bit-version portabël	
k-4	Pentium® Dual-Core E5300 CPU 2.6 GHz,	2	300=150+100+50	Win 10 64-bit,cpu-z, speccy, Raptor, c-free5, devcpp, office 2007, Matlab2015-64bit-version portabël	
k-5	Intel® Celeron® CPU 440 @ 2 GHz	1	150=100+50	Win 10 64-bit,cpu-z, speccy, Raptor, c-free5, devcpp, office 2007, Matlab2015-64bit-version portabël	Me CD/DVD te jashtem instalimi win 10, s hap suportin!!
k-6	Intel® Core (TM) 2 Duo CPU E15002.2GHz,	1	150=100+50	Win 10 64-bit,cpu-z, speccy, Raptor, c-free5, devcpp, office 2007, Matlab2015-64bit-version portabël	
k-7	Intel® Celeron® CPU 440 @ 2 GHz	1	150=100+50	Win 10 64-bit,cpu-z, speccy, Raptor, c-free5, devcpp, office 2007, Matlab2015-64bit-version portabël	Probleme startimi, butoni startimit s' kontakton korrekt!!! CD/DVD s del në explore! (ne dollap u zvendësua)
k-8	Intel® Celeron® CPU 440 @ 2 GHz	1	150=100+50	Win 10 64-bit,cpu-z, speccy, Raptor, c-free5, devcpp, office 2007, Matlab2015-64bit-version portabël	
k-9	Intel® Celeron® CPU 440 @ 2 GHz	1	150=100+50	Win 10 64-bit,cpu-z, speccy, Raptor, c-free5, devcpp, office 2007, Matlab2015-64bit-version portabël	Pulsonekroani
k-10	Intel® Celeron® CPU 440 @ 2 GHz	1	150=100+50	Win 10 64-bit,cpu-z, speccy, Raptor, c-free5, devcpp, office 2007, Matlab2015-64bit-version portabël	
k-11	Intel® Core (TM) 2 Duo CPU E1500 2.2GHz	1	150=100+50	Win 10 64-bit,cpu-z, speccy, Raptor, c-free5, devcpp, office 2007, Matlab2015-64bit-version portabël	
k-12	Intel® Celeron® CPU 440 @ 2 GHz	1	150=100+50	Win 10 64-bit,cpu-z, speccy, Raptor, c-free5, devcpp, office 2007, Matlab2015-64bit-version portabël	Verifiko
k-13	Intel® Celeron® CPU 440 @ 2 GHz	4	150=100+50	Win 10 64-bit,cpu-z, speccy, Raptor, c-free5, devcpp, office 2007, Matlab2015-64bit-version portabël	
k-14	Intel® Celeron® CPU 440 @ 2 GHz	1	150=100+50	Win 10 64-bit,cpu-z, speccy, Raptor, c-free5, devcpp, office 2007, Matlab2015-64bit-version portabël	
k-15	Intel® Celeron® CPU 440 @ 2 GHz	2	150	Win 10 64-bit,cpu-z, speccy, Raptor, c-free5, devcpp, office 2007, Matlab2015-64bit-version portabël	NTLDR is missing. Me CD/DVD te jashtem instalimi win 10
k-16	Intel® Celeron® CPU 440 @ 2 GHz	1	150=100+50	Win 10 64-bit,cpu-z, speccy, Raptor, c-free5, devcpp, office 2007, Matlab2015-64bit-version portabël	Verifiko..!!!!
k-17	Intel® Celeron® CPU 440 @ 2 GHz	1	150=100+50	Win 10 64-bit,cpu-z, speccy, Raptor, c-free5, devcpp, office 2007, Matlab2015-64bit-version portabël	
k-18	Intel® Core (TM) 2 Duo CPU E1500 2.2GHz,	1	150=100+50	Win 10 64-bit,cpu-z, speccy, Raptor, c-free5, devcpp, office 2007, Matlab2015-64bit-version portabël	CD/DVD=ERROR 0x 0...ndaj u krye me pajisjetëjashtmeinstalimi win 10,
k-19	Intel® Core (TM) 2 Duo CPU E1500 2.2GHz,	1	150=100+50	Win 10 64-bit,cpu-z, speccy, Raptor, c-free5, devcpp, office 2007, Matlab2015-64bit-version portabël	
k-20	Intel® Celeron® CPU 440 @ 2 GHz	1	80=41.5+32.54 HDD u ndërrua controller i diskut jep gabim	Win 10 64-bit,cpu-z, speccy, Raptor, c-free5, devcpp, office 2007, Matlab2015-64bit-version portabël	CD/DVD=ERROR 0x 0...ndaj u krye me pajisjetëjashtmeinstalimi win 10,
Brunela ACER	AMD Athlon(TM)II X3 455 procesor	4	300=150+100+50	Win 10 64-bit,cpu-z, speccy, Raptor, c-free5, devcpp, office 2007, Matlab2015-64bit-version portabël	

Softë të tjera instaluar: Advanced-systemcare, Malware fighter, Driver-Bootster, CPU-Z, Speccy, ccleaner, , google chrome, flash player, winzip, Raptor.



Ndarja e burimeve në rrjet: në 21 kompjutera është 1 direktori k-x(x=1deri 20)je ndarë në rrjet.

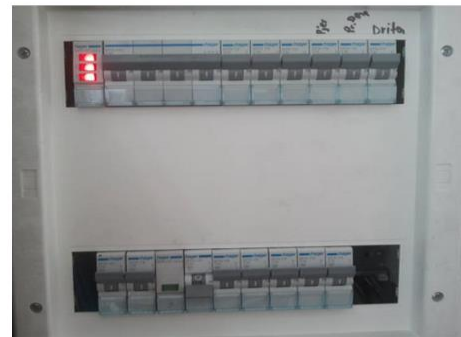
Nga kompjuteri Brunela mund të kopjohen skedarët e nevojshëm për laboratorët e studentëve në 20 kompjuterat e tjerë.



AUTOMAT

7	6	5	4	3	2	1
---	---	---	---	---	---	---

1. Ndrëhim
2. Priza tek dera
3. Priza tek pjerrësia
4. Priza tek kasaforta
5. Priza tek tavolina në fund poshtë dritares





- Kompjuteri k-20 iu hoq hdd dhe u vendos një sata 80 GB, sepse ekzistuesi nuk mundësonte boot. (Aktivizimi në BIOS i kontrollit përsëri nuk lejonte boot!!)

Shënim: Inventari i pajisjeve tavolina s' mund të mbahet sipas barkodit sepse letra mbi tavolinë mund të griset lehtësisht, por sipas përmasave, të cilat në dokumentacion duhet të përputhen me barkodin përkatës.